

REQUEST FOR LEGISLATIVE APPROPRIATIONS

For Fiscal Years 2020 and 2021

Submitted to the
Governor's Office of Budget and Planning
and the Legislative Budget Board

by

Texas A&M International University



Revised October 19, 2018



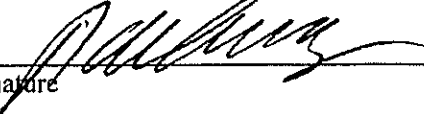
CERTIFICATE

Agency Name Texas A&M International University

This is to certify that the information contained in the agency Legislative Appropriations Request filed with the Legislative Budget Board (LBB) and the Governor's Office Budget Division (Governor's Office) is accurate to the best of my knowledge and that the electronic submission to the LBB via the Automated Budget and Evaluation System of Texas (ABEST) and the PDF file submitted via the LBB Document Submission application are identical.

Additionally, should it become likely at any time that unexpended balances will accrue for any account, the LBB and the Governor's Office will be notified in writing in accordance with Article IX, Section 7.01 (2018-19 GAA).

Chief Executive Officer or Presiding Judge


Signature

Dr. Pablo Arenaz

Printed Name


President

Title

07/30/2018

Date

Board or Commission Chair


Signature

Mr. Charles W. Schwartz

Printed Name

Chairman, Board of Regents

Title

07/30/2018

Date

Chief Financial Officer


Signature

Mr. Juan J. Castillo

Printed Name

Vice President for Finance and Administration/CFO

Title

07/30/2018

Date

TABLE OF CONTENTS

	<u>PAGE</u>
Administrator’s Statement.....	1
Agency Mission.....	6
Departmental Organizational Structure.....	7
Budget Overview – Biennial Amounts.....	8
Summary of Request	
2.A Summary of Base Request by Strategy.....	9
2.B Summary of Base Request by Method of Finance.....	13
2.C Summary of Base Request by Object of Expense.....	18
2.D Summary of Base Request by Objective Outcomes.....	19
2.E Summary of Exceptional Items Request.....	22
2.F Summary of Total Request by Strategy.....	23
2.G Summary of Total Request Objective Outcomes.....	27
Strategy Request 3.A	
Provide Instructional and Operations Support	
1.1.1 Operations Support.....	31
1.1.3 Staff Group Insurance Premiums.....	35
1.1.4 Workers’ Compensation Insurance.....	37
1.1.5 Unemployment Compensation Insurance.....	39
1.1.6 Texas Public Education Grants.....	41
Provide Infrastructure Support	
2.1.1 Educational and General Space Support.....	43
2.1.2 Tuition Revenue Bond Retirement.....	46
2.1.5 Small Institution Supplement.....	48
Provide Non-Formula Support	
3.1.3 Academic and Student Support.....	50
3.3.1 Institute for International Trade.....	52

3.3.2 Small Business Development Center.....	55
3.4.1 Institutional Enhancement.....	57
3.4.3 Outreach and Enrollment.....	60
3.5.1 Exceptional Item Request.....	62
 Research Funds	
6.3.1 Comprehensive Research Fund.....	64
 Program-Level Request Schedule 3.A.1	67
 Request for Exceptional Items	
4.A Exceptional Item Request Schedule 4.A	
Path to Academic and Student Success (PASS)	68
Additions and Renovation of Fine and Performing Arts Instructional and Support Spaces	70
Student Classroom and Events Center.....	72
4.B Exceptional Items Strategy Allocation Schedule.....	74
4.C Exceptional Items Strategy Request.....	77
 Supporting Schedules	
6.A Historically Underutilized Business (HUB) Supporting Schedule.....	79
6.H Estimated Funds Outside the Institution’s Bill Pattern.....	80
6.I Ten Percent Biennial Base Reduction Options.....	81
6.L Document Production Standards.....	84
8. Summary of Request for Capital Project Financing.....	85
 Higher Education Supporting Schedules	
Schedule 1A: Other Educational and General Income.....	86
Schedule 2: Selected Educational, General & Other Funds.....	89
Schedule 3B: Staff Group Insurance Data Elements (UT/ A&M).....	90
Schedule 4: Computation of OASI.....	93
Schedule 5: Calculation of Retirement Proportionality and ORP Differential.....	94
Schedule 6: Constitutional Capital Funding.....	95
Schedule 7: Personnel.....	96

Schedule 8A: Tuition Revenue Bond Projects..... 98
Schedule 8C: Tuition Revenue Bonds Request by Project..... 100
Schedule 9: Non Formula Support Information
 • Academic and Student Support..... 101
 • Institute for International Trade..... 103
 • Institutional Enhancement..... 106
 • Outreach and Enrollment..... 108
 • Path to Academic and Student Success (PASS) 111
 • Small Business Development Center..... 113

Schedules Not Included

Agency Code: 761	Agency Name: Texas A&M International University	Prepared By: Fred Juarez III	Date: 07/30/2018
----------------------------	---	--	----------------------------

For the schedules identified below, the Texas A&M International University administration has no information to report or the schedule is not applicable. Accordingly, these schedules have been excluded from the Texas A&M International University Legislative Appropriations Request for the 2020-2021 biennium.

Schedule

Number	Name
2.C.1	Operating Costs Details ~ Base Request
3.C.	Rider Appropriations and Unexpended Balances Request
5.A-E	Capital Budget
6.C.	Federal Funds Supporting Schedule
6.D.	Federal Funds Tracking Schedule
6.E.	Estimated Revenue Collections Supporting Schedule
6.F.a.	Advisory Committee Supporting Schedule - Part A
6.F.b.	Advisory Committee Supporting Schedule - Part B
6.G	Homeland Security Funding
6.K.	Part A Budgetary Impacts Related to Recently Enacted State Legislation Schedule
6.K.	Part B Summary of Related to Recently Enacted State Legislation
7.A.	Indirect Administrative and Support Cost
7.B.	Direct Administrative and Support Costs
	Capital Budget Allocation to Strategies by Project - Exceptional
	Capital Budget Project Schedule - Exceptional
	General Revenue(GR) & General Revenue Dedication(GR-D) Baseline
Schedule 3A	Staff Group Insurance Data Elements (ERS)
Schedule 3D	Group Insurance Data Elements (Supplemental)
Schedule 8B	Tuition Revenue Bond Issuance History

Administrator's Statement

10/15/2018 2:39:06PM

86th Regular Session, Agency Submission, Version 1
Automated Budget and Evaluation System of Texas (ABEST)

761 Texas A&M International University

The South Texas Border Region:

As the nation's largest inland port, Laredo continues to be a thriving economic engine in a region propelled by the banking, logistics, international commerce, and manufacturing industries. In addition to the region's remarkable growth, 44% of its population is under 25 years of age, with only 17.5% of those 25 years and older holding a baccalaureate degree. Not surprisingly, their children are overwhelmingly the first in their family to attend college, the first step in turning the tide of a region plagued with a poverty rate of over 30%. For these young people to prosper economically, and participate fully as productive citizens, a great proportion of them must enter and finish college as evidenced by the considerably lower, local poverty rate of just over 5% for those over 25 possessing a baccalaureate degree.

Serving a young and productive population in a rapidly growing region, Texas A&M International University (TAMIU), has shared in this rapid growth. Its enrollment has more than doubled in the past 15 years to over 7,600 students. To be certain, neither the University nor the State should be satisfied with the educational attainment of the region, but if the baccalaureate attainment rate of today is contrasted with that before the University existed in its present form, a then-bleak picture has grown consistently brighter. In 1990, only 11% of those age 25 and above held a baccalaureate degree. This over 50% increase in baccalaureate degree attainment eclipses that of the State, which stands at 38% for the same period, due in large part to the State's past investment in the University and our prudent use of State funds to provide academic and financial support to these students. Among the regional universities with the lowest administrative costs, TAMIU has proven its ability to attract, retain, and graduate students who in decades past would not have attended or graduated from college.

With a 2018 freshman cohort, over 50% the first in their family to attend college, the University still has much it can do to fulfill its mission of improving "...the quality of lives for the citizens of the border region." With crucial support, including formula and non-formula appropriations, TAMIU will continue its proven success in doing so.

Student Success:

TAMIU aspires to be a premier university of choice, serving as the agent of change for the people of the region through multicultural teaching, research, and service. Beginning with an aggressive outreach initiative which takes proven strategies for enrolling and succeeding in higher education to high schools throughout the South Texas region, and anchored by a broad array of programs targeting academic success and personal growth, our Student Success Program creates a comprehensive support structure of peer mentors, tutors, academic and financial advisors, and counselors. Most importantly, any student success program must begin prior to admission and continue through graduation.

The success of our program is evident in our enrollment growth, along with our retention and graduation rates of an overwhelmingly Hispanic population, most of whom (78%) receive some form of financial aid. With a first-year student persistence rate among the highest in the State at 86.3%, TAMIU has a six-year graduation rate of 53.8%. Perhaps the greatest indicator of success, however, is the 78% gainful employment rate of our graduates—8% over the State average. Our return on investment comes not only from our graduates' transition to productive citizenry, but also in a regional unemployment rate which mirrors the State's rate of 4%, while other South Texas border counties range from 6.2% to 10.8%.

The University continues to earn accolades for its transformative ability to increase graduates' income mobility, rocketing them from the bottom 40% to the top 40% of income. TAMIU ranked first in Texas and third in the nation for enhanced income mobility in studies by Stanford University's Equality of Opportunity Project. The American Council on Education, citing the Project, recognized TAMIU as a top scoring Texas institution in its national report, "Minority Serving Institutions as Engines of Upward Mobility." Additional acclaim has come from Washington Monthly Magazine, which singled out TAMIU as 4th for "Best Bang for the Buck" among the nation's Southern Schools. News of the University's accessibility, affordability and value added has enhanced undergraduate and graduate student recruitment.

Administrator's Statement

10/15/2018 2:39:06PM

86th Regular Session, Agency Submission, Version 1
Automated Budget and Evaluation System of Texas (ABEST)

761 Texas A&M International University

Community College and Expanding School District Relationships:

TAMIU has built a strong relationship with Laredo College (LC), formerly known as Laredo Community College. Our 2+2 articulation agreement embeds a TAMIU advisor in the LC campus' outreach office to provide counsel on courses necessary for the students' eventual transfer and attainment of a baccalaureate degree. This advisor serves as a one-stop resource for students wishing to transfer by providing degree plan and admissions information and financial services support. The University pursues aggressive outreach to these students by also conducting transfer fairs which assist students transitioning to the University.

As a regional University of choice, the University has also extended this model arrangement, actively seeking new Memoranda of Understanding with other community colleges, including Southwest Texas Junior College (Uvalde), Alamo Colleges (San Antonio), and San Jacinto College (Pasadena).

More importantly, the University is reaching out to future students at an even earlier juncture by offering courses to high school students at the Laredo Independent School District's Early College High School (ECHS) and at TAMIU's own Julieta & Frank Staggs Academy of International and STEM Studies. Located adjacent to the campus, the ECHS is ranked 22nd in the State and 113th in the Nation among Best High Schools and is the only Exemplary high school in Laredo. Our Academy was established through legislation approved by the 79th Texas Legislature and provides an innovative, accelerated curriculum for motivated Texas high school juniors and seniors. Our 2018 graduating class earned an average of 63 semester credit hours with an average GPA of 3.25. These gifted students have already successfully completed more than two years of college coursework—while still in high school! We believe these models, with high school students taught by University faculty at the University, guarantee an appropriate level of rigor to ensure students' future success following their high school graduation.

Veterans' Affairs:

Texas A&M International University is committed to being military friendly by assisting all veterans with the transition to University life and to productive careers. Upon admission to the University, veterans have a one-on-one meeting with the veteran affairs coordinator to review specific degree plan requirements and University services. Thereafter, veterans are assisted each semester with the educational benefit certification process to ensure timely awarding of veteran benefits and advised of important upcoming events and deadlines. The veteran affairs coordinator also works with Laredo College and other institutions of higher education to assist veterans transferring between institutions to ensure accurate and timely benefit awards and with the Texas Veterans Workforce to assist veterans with obtaining employment, both, while attending the University and following graduation. Our military friendly services are offered not only to our veterans, but to their dependents, as well.

High Priority Requests of The Texas A&M University System:

Base Funding – Maintaining an equitable, reliable, and predictable source of funding for higher education is critical to allow our institutions to plan and grow, teach and support our students through to graduation, and pursue excellence. This base funding is provided by the State through both formula and non-formula support.

Formula funding, which accounts for 80 percent of our institutions' net GR appropriations, supports the core instructional, operational and infrastructure costs at our institutions and is not keeping pace on a per student basis as enrollments grow. And that is before considering inflation. Consistent formula appropriations that fund student enrollment growth and inflation are needed to avoid adverse impacts on students' success. Our highest priority is additional funding in the formulas to cover student enrollment growth through the spring 2019 semester. Any additional funding you can provide through the formulas to increase the rates to cover the cost of inflation on the state's share of the cost of educating students will help to offset pressure on the portion of core costs borne by tuition.

Administrator's Statement

10/15/2018 2:39:06PM

86th Regular Session, Agency Submission, Version 1
Automated Budget and Evaluation System of Texas (ABEST)

761 Texas A&M International University

Until formula funding can keep pace with enrollment growth and inflation, non-formula support remains a critical source of base funding. The Legislature has already enacted two recent major step downs on non-formula support items. For the general academics, these items were cut by approximately one-third last session. These cuts are on top of the 25 percent reductions in special items made during the 2011 session. We request that non-formula support items be maintained at current levels in the upcoming biennium.

We also request consideration of expanding the Small Institution Supplement – both in lengthening the runway to include institutions up to 20,000 headcount and increasing the amount of funding provided through this formula supplement. Institutions with fewer than 20,000 students do not have the economies of scale of a research or emerging research institution and therefore are not able to operate on the formula-only funding. Additional funding through this mechanism could be an important tool in getting institutions to a point of financial stability as they grow to the 20,000 student enrollment.

Even though the A&M Agencies do not have an operations formula, they need base funding support much in the same manner as the formulas that provide basic, on-going support for the academics and health related institutions.

Outcomes Based Funding - Our Board is increasingly incorporating performance and outcomes into our internal budget review processes. We welcome a continued dialog on this issue during the legislative session. However, we believe there are several fundamentals that are important in consideration of any performance funding system:

- Any performance funding should be an incentive bonus on top of current formula funding. Again, formula funding is not keeping pace on a per student basis as enrollments grow. Reallocating existing formula funding for performance will negatively impact some of the very institutions that performance funding is trying to incentivize.
- A fundamental consideration with any performance funding model is the need to avoid penalizing institutions already performing at a high level vs. putting in place a system that rewards those that have room to improve.
- Any performance funding model should be implemented over an extended period of time.
- Higher Education Group Health Insurance – We request funding to cover increases in covered enrollments and in health care costs that are beyond our control. We would also request restoration of some of the ever-widening gap in funding level for our employees as compared to the employees in the state employees ERS group insurance plan.

Student Financial Aid – We request increased support for student financial aid because it is vitally important for our students and families and will help students graduate with lower debt. However, since it is a method of paying for tuition and fees and does not increase much needed funding for the universities, we request increases to TEXAS grants and other financial aid programs be made in conjunction with funding the formula that provides the state's share of the costs of educating students.

High Priority Requests for Texas A&M International University:

The University was one of several beneficiaries of the 71st Texas Legislature's action on the South Texas Border Initiative which increased appropriations to enhance the scope and quality of universities along the Texas-Mexico Border. This special appropriation, originally called "Academic Program Development," provided access and support for at-risk, low income, first-generation, Hispanic students to be successful and even though nominally referred to as a Special Item, it was intended as base funding in addition to existing formula funding. The 76th Legislature obscured the purpose of this special appropriation by renaming it Institutional Enhancement, a non-formula source of funding given to universities across the State, in addition to those of the border region. With the unfortunate misnomer of "enhancement," this appropriation came to be seen as supplemental and unnecessary. The Legislature has found it necessary to impose multiple cuts to this item over the years to the point

Administrator's Statement

10/15/2018 2:39:06PM

86th Regular Session, Agency Submission, Version 1
Automated Budget and Evaluation System of Texas (ABEST)

761 Texas A&M International University

that it now stands at less than 75% of that appropriated in 2000 – a time when enrollment was less than half of what it is today. Most importantly, as indicated above, even though significant progress has been made in expanding the number of individuals earning baccalaureate degrees, the region's population remains largely at-risk, low income, first-generation Hispanics—the same demographic profile which led to the implementation of the South Texas Border Initiative in the first place.

In addition to Institutional Enhancement (\$8,662,813), two other non-formula items are devoted to supporting and achieving student retention and graduation success-- namely, Academic and Student Support (\$2,068,547), and Outreach and Enrollment (\$1,041,427). Together, these three non-formula items fund 41% of Education & General (E&G) faculty with Institutional Enhancement and Academic and Student Support used solely for faculty salaries and Outreach and Enrollment used for academic advisors, in addition to faculty salaries. These three items represent an integral part of the base funding for this University, and maintaining, not to mention improving, the success of graduating students from the South Texas region depends upon the continued appropriation of these three items. Given the similarity in strategies of all three items, we are requesting the merging of Institutional Enhancement and Outreach and Enrollment into our Academic and Student Support item.

Existing Non-formula Items – While the three items above are truly base funding for educating and supporting students' success and thus the highest priority, it is also vital that the University retain the funding for its remaining non-formula items which include \$262,917 for the Institute for International Trade (IIT) and \$238,761 for the Small Business Development Center (SBDC). The IIT publishes the highly regarded International Trade Journal, a source of scholarship for faculty, students and the general academic community, and supports vital research to enhance the border region's competitive position. The SBDC also supports research with applied economics projects and provides for economic development by increasing capital access, business starts and expansions, job creation, and retention.

Exceptional Items – The University is requesting the following exceptional item to provide the resources necessary to sustain growth and achieve the goals of the Coordinating Board's 60x30TX plan:

- Path to Academic and Student Success (PASS) - \$4,000,000 (biennial amount) – This item builds on the University's student success initiatives for freshmen and sophomores and expands them to juniors and seniors by initiating proven success measures to help students overcome academic challenges, building academic identity and sense of belonging, and monitoring student success and timely progress toward graduation. This item, if funded, will ensure the University's 6-year graduation rate, already in the top half of all institutions at 53.8%, will improve. As with our other base funding non-formula items, this item should be classified in the Instructional Support strategy with an Academic and Student Support focus.

Capital Projects – The Texas Higher Education Coordinating Board has calculated deficit of 216,013 square feet for the University (as of fall 2017). To help eliminate this deficit and accommodate our increasing student enrollment, we are requesting two capital projects.

- Addition and Renovation of Fine and Performing Arts Instructional and Support Spaces - \$10,000,000 – This addition of approximately 16,000 gross square feet and renovation of approximately 10,000 gross square feet provides new/renovated studios, classrooms, rehearsal halls, and individual instruction/practice spaces.

- Student Classroom and Events Center - \$75,000,000 – This addition of approximately 200,000 gross square feet of classroom, large assembly, activity, and related support spaces will provide necessary spaces to host large-format, institutional, and student events to meet the growing needs of the University. As the plans for this building are on the University's currently undeveloped property, the project also includes necessary infrastructure such as utilities, roads and parking, figuring into the higher cost.

Effects of a 10% Reduction:

Administrator's Statement

10/15/2018 2:39:06PM

86th Regular Session, Agency Submission, Version 1
Automated Budget and Evaluation System of Texas (ABEST)

761 Texas A&M International University

A 10% reduction for the University amounts to \$1,214,407. A reduction of this magnitude could only be taken from the University's base funding non-formula items—those items responsible for the academic success of our students. As these items fund solely faculty and advisors, any reduction would result in fewer course offerings and a possible increase in the number of lower-cost adjunct faculty. Due to the scarcity of qualified adjuncts in the Laredo region, it is impossible to substitute adjuncts for full-time faculty without compromising the quality of student support and academic programs. Our first year success program would also suffer, and without this crucial support for our at-risk, low income, first generation, Hispanic students, increased time to degree and overall lower graduation rates would follow.

Criminal Background Checks:

The University has a rule which outlines the process for conducting criminal background checks on all new hires in accordance with Texas A&M University System regulations.

Summary of Request:

The creation of Texas A&M International University has brought new life to the citizens of South Texas. Today, TAMIU is a University of choice, providing access to excellence focused on a measurably better life for all. With appropriate resources, the overwhelmingly Hispanic young men and women of this region are building better lives of meaning and purpose for themselves and their families and driving the State of Texas' growth. Adequate funding to sustain existing and new initiatives will ensure fulfillment of the University's mission, support student success, achieve the goals of the 60x30TX plan, and continue to extend the great American dream to all who are willing to work for and earn it.

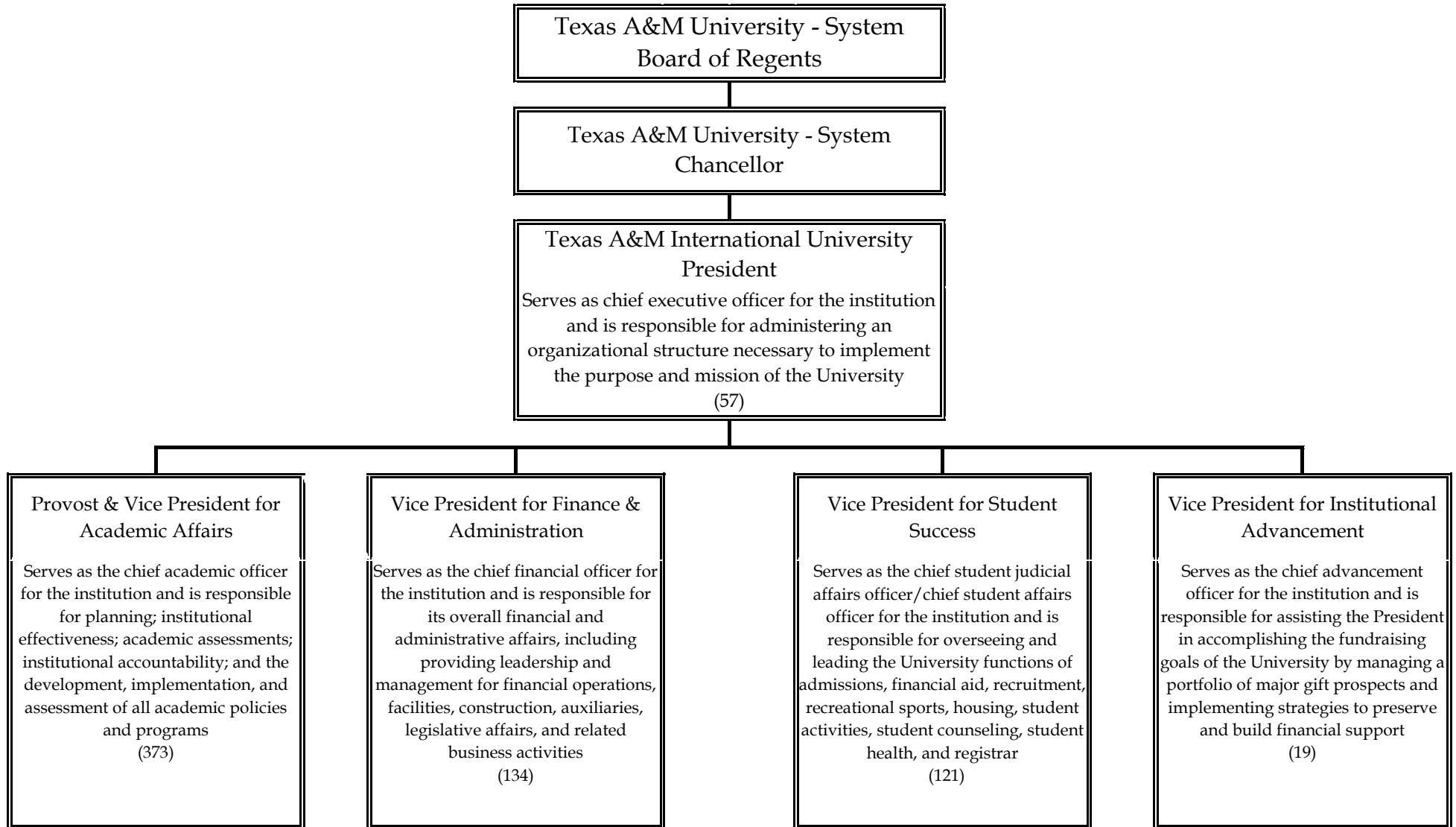
Agency code: **761** Agency name: **Texas A&M International University**

AGENCY MISSION

Texas A&M International University (TAMIU), a member of The Texas A&M University System, prepares students for leadership roles in an increasingly complex, culturally diverse state, national, and global society. TAMIU provides a learning environment built on a solid academic foundation in the arts and sciences. The University offers a range of baccalaureate and master's programs and the Doctor of Philosophy degree in International Business Administration. In addition, the University pursues a progressive agenda for global study and understanding across all disciplines.

Through instruction, faculty and student research, and public service, Texas A&M International improves the quality of lives for citizens of the border region, the state of Texas, and national and international communities.

TEXAS A&M INTERNATIONAL UNIVERSITY™



Budget Overview - Biennial Amounts
86th Regular Session, Agency Submission, Version 1
Automated Budget and Evaluation System of Texas (ABEST)

761 Texas A&M International University
Appropriation Years: 2020-21

	GENERAL REVENUE FUNDS		GR DEDICATED		FEDERAL FUNDS		OTHER FUNDS		ALL FUNDS		EXCEPTIONAL ITEM FUNDS	
	2018-19	2020-21	2018-19	2020-21	2018-19	2020-21	2018-19	2020-21	2018-19	2020-21	2020-21	
Goal: 1. Provide Instructional and Operations Support												
1.1.1. Operations Support	27,263,612		12,384,268						39,647,880			
1.1.3. Staff Group Insurance Premiums			2,123,875	2,401,664					2,123,875	2,401,664		
1.1.4. Workers' Compensation Insurance	52,782	52,782							52,782	52,782		
1.1.5. Unemployment Compensation Insurance	398	398							398	398		
1.1.6. Texas Public Education Grants			2,612,874	2,571,728					2,612,874	2,571,728		
Total, Goal	27,316,792	53,180	17,121,017	4,973,392					44,437,809	5,026,572		
Goal: 2. Provide Infrastructure Support												
2.1.1. E&G Space Support	4,884,358		2,053,750						6,938,108			
2.1.2. Tuition Revenue Bond Retirement	17,316,858	17,166,830							17,316,858	17,166,830	14,647,008	
2.1.5. Small Institution Supplement	783,000								783,000			
Total, Goal	22,984,216	17,166,830	2,053,750						25,037,966	17,166,830	14,647,008	
Goal: 3. Provide Non-formula Support												
3.1.3. Academic And Student Support	2,068,547	2,068,547							2,068,547	2,068,547		
3.3.1. Institute For International Trade	79,342	79,342	331,003	331,003			183,574	183,574	593,919	593,919		
3.3.2. Small Business Development Center	238,761	238,761							238,761	238,761		
3.4.1. Institutional Enhancement	8,662,813	8,662,813							8,662,813	8,662,813		
3.4.3. Outreach And Enrollment	1,041,427	1,041,427							1,041,427	1,041,427		
3.5.1. Exceptional Item Request												4,000,000
Total, Goal	12,090,890	12,090,890	331,003	331,003			183,574	183,574	12,605,467	12,605,467		4,000,000
Goal: 6. Research Funds												
6.3.1. Comprehensive Research Fund	305,172								305,172			
Total, Goal	305,172								305,172			
Total, Agency	62,697,070	29,310,900	19,505,770	5,304,395			183,574	183,574	82,386,414	34,798,869		18,647,008
Total FTEs									445.6	447.0		45.0

2.A. Summary of Base Request by Strategy

10/15/2018 2:39:12PM

86th Regular Session, Agency Submission, Version 1

Automated Budget and Evaluation System of Texas (ABEST)

761 Texas A&M International University

Goal / Objective / STRATEGY	Exp 2017	Est 2018	Bud 2019	Req 2020	Req 2021
1 Provide Instructional and Operations Support					
1 <i>Provide Instructional and Operations Support</i>					
1 OPERATIONS SUPPORT (1)	18,157,734	19,903,942	19,743,938	0	0
3 STAFF GROUP INSURANCE PREMIUMS	864,427	923,043	1,200,832	1,200,832	1,200,832
4 WORKERS' COMPENSATION INSURANCE	59,448	26,391	26,391	26,391	26,391
5 UNEMPLOYMENT COMPENSATION INSURANCE	10,190	199	199	199	199
6 TEXAS PUBLIC EDUCATION GRANTS	1,278,550	1,327,010	1,285,864	1,285,864	1,285,864
TOTAL, GOAL 1	\$20,370,349	\$22,180,585	\$22,257,224	\$2,513,286	\$2,513,286
2 Provide Infrastructure Support					
1 <i>Provide Operation and Maintenance of E&G Space</i>					
1 E&G SPACE SUPPORT (1)	3,411,139	3,469,054	3,469,054	0	0
2 TUITION REVENUE BOND RETIREMENT	10,919,798	8,660,091	8,656,767	8,591,243	8,575,587
5 SMALL INSTITUTION SUPPLEMENT (1)	366,900	391,500	391,500	0	0

(1) - Formula funded strategies are not requested in 2020-21 because amounts are not determined by institutions.

2.A. Summary of Base Request by Strategy

10/15/2018 2:39:12PM

86th Regular Session, Agency Submission, Version 1

Automated Budget and Evaluation System of Texas (ABEST)

761 Texas A&M International University

Goal / Objective / STRATEGY		Exp 2017	Est 2018	Bud 2019	Req 2020	Req 2021
TOTAL, GOAL	2	\$14,697,837	\$12,520,645	\$12,517,321	\$8,591,243	\$8,575,587
3 Provide Non-formula Support						
1 INSTRUCTIONAL SUPPORT						
3 ACADEMIC AND STUDENT SUPPORT		1,998,949	1,034,274	1,034,273	1,034,274	1,034,273
3 Public Service						
1 INSTITUTE FOR INTERNATIONAL TRADE		313,969	294,749	299,170	296,960	296,959
2 SMALL BUSINESS DEVELOPMENT CENTER		181,500	119,381	119,380	119,381	119,380
4 INSTITUTIONAL SUPPORT						
1 INSTITUTIONAL ENHANCEMENT		6,082,897	4,331,407	4,331,406	4,331,407	4,331,406
3 OUTREACH AND ENROLLMENT		750,000	520,714	520,713	520,714	520,713
5 Exceptional Item Request						
1 EXCEPTIONAL ITEM REQUEST		0	0	0	0	0
TOTAL, GOAL	3	\$9,327,315	\$6,300,525	\$6,304,942	\$6,302,736	\$6,302,731

2.A. Summary of Base Request by Strategy

10/15/2018 2:39:12PM

86th Regular Session, Agency Submission, Version 1

Automated Budget and Evaluation System of Texas (ABEST)

761 Texas A&M International University

Goal / Objective / STRATEGY	Exp 2017	Est 2018	Bud 2019	Req 2020	Req 2021
<u>6</u> Research Funds					
<u>3</u> Comprehensive Research Fund					
1 COMPREHENSIVE RESEARCH FUND	213,309	152,586	152,586	0	0
TOTAL, GOAL 6	\$213,309	\$152,586	\$152,586	\$0	\$0
TOTAL, AGENCY STRATEGY REQUEST	\$44,608,810	\$41,154,341	\$41,232,073	\$17,407,265	\$17,391,604
TOTAL, AGENCY RIDER APPROPRIATIONS REQUEST*				\$0	\$0
GRAND TOTAL, AGENCY REQUEST	\$44,608,810	\$41,154,341	\$41,232,073	\$17,407,265	\$17,391,604

2.A. Summary of Base Request by Strategy

10/15/2018 2:39:12PM

86th Regular Session, Agency Submission, Version 1

Automated Budget and Evaluation System of Texas (ABEST)

761 Texas A&M International University

Goal / Objective / STRATEGY	Exp 2017	Est 2018	Bud 2019	Req 2020	Req 2021
<u>METHOD OF FINANCING:</u>					
General Revenue Funds:					
1 General Revenue Fund	35,582,185	31,334,601	31,362,469	14,663,281	14,647,619
SUBTOTAL	\$35,582,185	\$31,334,601	\$31,362,469	\$14,663,281	\$14,647,619
General Revenue Dedicated Funds:					
704 Est Bd Authorized Tuition Inc	387,939	372,438	383,627	0	0
770 Est. Other Educational & General	8,500,799	9,355,515	9,394,190	2,652,197	2,652,198
SUBTOTAL	\$8,888,738	\$9,727,953	\$9,777,817	\$2,652,197	\$2,652,198
Other Funds:					
777 Interagency Contracts	137,887	91,787	91,787	91,787	91,787
SUBTOTAL	\$137,887	\$91,787	\$91,787	\$91,787	\$91,787
TOTAL, METHOD OF FINANCING	\$44,608,810	\$41,154,341	\$41,232,073	\$17,407,265	\$17,391,604

*Rider appropriations for the historical years are included in the strategy amounts.

2.B. Summary of Base Request by Method of Finance
 86th Regular Session, Agency Submission, Version 1
 Automated Budget and Evaluation System of Texas (ABEST)

10/15/2018 2:39:12PM

Agency code: 761 Agency name: Texas A&M International University

METHOD OF FINANCING	Exp 2017	Est 2018	Bud 2019	Req 2020	Req 2021
<u>GENERAL REVENUE</u>					
<u>1</u> General Revenue Fund					
<i>REGULAR APPROPRIATIONS</i>					
Regular Appropriations from MOF Table (2016-17 GAA)	\$31,404,554	\$0	\$0	\$0	\$0
Regular Appropriations from MOF Table (2018-19 GAA)	\$0	\$31,334,601	\$31,362,469	\$14,663,281	\$14,647,619
<i>TRANSFERS</i>					
HB 2, 84th Leg, Regular Session	\$4,269,483	\$0	\$0	\$0	\$0
Comments: Art III Special Provision for Higher Education, Sec 64, Contingency for HB100(2016-17 GAA)					
<i>LAPSED APPROPRIATIONS</i>					
Savings due to Hiring Freeze	\$(91,852)	\$0	\$0	\$0	\$0
Comments: FY 2017 Lapse of GR for Savings Due to Hiring Freeze					
TOTAL, General Revenue Fund	\$35,582,185	\$31,334,601	\$31,362,469	\$14,663,281	\$14,647,619

2.B. Summary of Base Request by Method of Finance
 86th Regular Session, Agency Submission, Version 1
 Automated Budget and Evaluation System of Texas (ABEST)

10/15/2018 2:39:12PM

Agency code: **761** Agency name: **Texas A&M International University**

METHOD OF FINANCING	Exp 2017	Est 2018	Bud 2019	Req 2020	Req 2021
TOTAL, ALL GENERAL REVENUE	\$35,582,185	\$31,334,601	\$31,362,469	\$14,663,281	\$14,647,619

GENERAL REVENUE FUND - DEDICATED

704 GR Dedicated - Estimated Board Authorized Tuition Increases Account No. 704

REGULAR APPROPRIATIONS

Regular Appropriations from MOF Table (2016-17 GAA)

\$346,629 \$0 \$0 \$0 \$0

Regular Appropriations from MOF Table (2018-19 GAA)

\$0 \$379,829 \$379,829 \$0 \$0

BASE ADJUSTMENT

Revised Receipts

\$41,310 \$(7,391) \$3,798 \$0 \$0

Comments: Revised Receipts

TOTAL, GR Dedicated - Estimated Board Authorized Tuition Increases Account No. 704	\$387,939	\$372,438	\$383,627	\$0	\$0
---	------------------	------------------	------------------	------------	------------

770 GR Dedicated - Estimated Other Educational and General Income Account No. 770

REGULAR APPROPRIATIONS

Regular Appropriations from MOF Table (2016-17 GAA)

2.B. Summary of Base Request by Method of Finance
 86th Regular Session, Agency Submission, Version 1
 Automated Budget and Evaluation System of Texas (ABEST)

10/15/2018 2:39:12PM

Agency code: 761		Agency name: Texas A&M International University				
METHOD OF FINANCING	Exp 2017	Est 2018	Bud 2019	Req 2020	Req 2021	
<u>GENERAL REVENUE FUND - DEDICATED</u>						
	\$7,847,623	\$0	\$0	\$0	\$0	
Regular Appropriations from MOF Table (2018-19 GAA)	\$0	\$8,800,041	\$8,833,162	\$2,652,197	\$2,652,198	
<i>BASE ADJUSTMENT</i>						
Revised Receipts	\$653,176	\$555,474	\$561,028	\$0	\$0	
Comments: Revised Receipts						
TOTAL, GR Dedicated - Estimated Other Educational and General Income Account No. 770	\$8,500,799	\$9,355,515	\$9,394,190	\$2,652,197	\$2,652,198	
TOTAL GENERAL REVENUE FUND - DEDICATED - 704, 708 & 770	\$8,888,738	\$9,727,953	\$9,777,817	\$2,652,197	\$2,652,198	
TOTAL, ALL GENERAL REVENUE FUND - DEDICATED	\$8,888,738	\$9,727,953	\$9,777,817	\$2,652,197	\$2,652,198	
TOTAL, GR & GR-DEDICATED FUNDS	\$44,470,923	\$41,062,554	\$41,140,286	\$17,315,478	\$17,299,817	

OTHER FUNDS

777 Interagency Contracts

2.B. Summary of Base Request by Method of Finance

10/15/2018 2:39:12PM

86th Regular Session, Agency Submission, Version 1

Automated Budget and Evaluation System of Texas (ABEST)

Agency code: 761		Agency name: Texas A&M International University				
METHOD OF FINANCING		Exp 2017	Est 2018	Bud 2019	Req 2020	Req 2021
<u>OTHER FUNDS</u>						
<i>REGULAR APPROPRIATIONS</i>						
	SB1, Legislature Regular Session, Art III, Rider 3 Page 77	\$137,887	\$0	\$0	\$0	\$0
	SB1, Legislature Regular Session Art III, Rider 3 Page 81	\$0	\$137,887	\$137,887	\$91,787	\$91,787
	Conference Committee Report, SB No. 1 (May 2017) - Technical Correction	\$0	\$(46,100)	\$(46,100)	\$0	\$0
TOTAL,	Interagency Contracts	\$137,887	\$91,787	\$91,787	\$91,787	\$91,787
TOTAL, ALL	OTHER FUNDS	\$137,887	\$91,787	\$91,787	\$91,787	\$91,787
GRAND TOTAL		\$44,608,810	\$41,154,341	\$41,232,073	\$17,407,265	\$17,391,604

2.B. Summary of Base Request by Method of Finance

10/15/2018 2:39:12PM

86th Regular Session, Agency Submission, Version 1

Automated Budget and Evaluation System of Texas (ABEST)

Agency code: 761	Agency name: Texas A&M International University				
METHOD OF FINANCING	Exp 2017	Est 2018	Bud 2019	Req 2020	Req 2021
FULL-TIME-EQUIVALENT POSITIONS					
REGULAR APPROPRIATIONS					
Regular Appropriations from MOF Table (2016-17 GAA)	520.0	0.0	0.0	0.0	0.0
Regular Appropriations from MOF Table (2018-19 GAA)	0.0	495.6	495.6	447.0	447.0
LAPSED APPROPRIATIONS					
Savings Due to Hiring Freeze	(8.0)	0.0	0.0	0.0	0.0
UNAUTHORIZED NUMBER OVER (BELOW) CAP					
Unauthorized Number over(Below) Cap	(66.8)	(74.4)	(50.0)	0.0	0.0
TOTAL, ADJUSTED FTES	445.2	421.2	445.6	447.0	447.0
NUMBER OF 100% FEDERALLY FUNDED FTEs					

2.C. Summary of Base Request by Object of Expense

10/15/2018 2:39:12PM

86th Regular Session, Agency Submission, Version 1
Automated Budget and Evaluation System of Texas (ABEST)

761 Texas A&M International University

OBJECT OF EXPENSE	Exp 2017	Est 2018	Bud 2019	BL 2020	BL 2021
1001 SALARIES AND WAGES	\$10,894,545	\$12,220,029	\$12,156,457	\$691,307	\$691,304
1002 OTHER PERSONNEL COSTS	\$305,468	\$325,199	\$298,199	\$199	\$199
1005 FACULTY SALARIES	\$18,961,138	\$17,362,578	\$17,317,563	\$5,611,429	\$5,611,427
2001 PROFESSIONAL FEES AND SERVICES	\$37,241	\$35,000	\$15,000	\$0	\$0
2003 CONSUMABLE SUPPLIES	\$126,480	\$125,000	\$125,000	\$0	\$0
2004 UTILITIES	\$1,003,504	\$0	\$0	\$0	\$0
2005 TRAVEL	\$2,336	\$0	\$0	\$0	\$0
2008 DEBT SERVICE	\$10,919,798	\$8,660,091	\$8,656,767	\$8,591,243	\$8,575,587
2009 OTHER OPERATING EXPENSE	\$2,358,300	\$2,426,444	\$2,663,087	\$2,513,087	\$2,513,087
OOE Total (Excluding Riders)	\$44,608,810	\$41,154,341	\$41,232,073	\$17,407,265	\$17,391,604
OOE Total (Riders)					
Grand Total	\$44,608,810	\$41,154,341	\$41,232,073	\$17,407,265	\$17,391,604

2.D. Summary of Base Request Objective Outcomes
 86th Regular Session, Agency Submission, Version 1
 Automated Budget and Evaluation system of Texas (ABEST)

10/15/2018 2:39:12PM

761 Texas A&M International University

Goal/ Objective / Outcome	Exp 2017	Est 2018	Bud 2019	BL 2020	BL 2021
1 Provide Instructional and Operations Support					
1 Provide Instructional and Operations Support					
KEY 1 % 1st-time, Full-time, Degree-seeking Frsh Earn Degree in 6 Yrs	43.91%	44.08%	44.24%	44.79%	45.27%
2 % 1st-time, Full-time, Degree-seeking White Frsh Earn Degree in 6 Yrs	55.56%	40.00%	25.00%	23.50%	72.20%
3 % 1st-time, Full-time, Degree-seeking Hisp Frsh Earn Degree in 6 Yrs	43.78%	44.87%	45.70%	46.53%	47.35%
4 % 1st-time, Full-time, Degree-seeking Black Frsh Earn Degree in 6 Yrs	0.00%	0.00%	33.33%	33.33%	0.00%
5 % 1st-time, Full-time, Degree-seeking Other Frshmn Earn Deg in 6 Yrs	50.00%	36.40%	35.00%	24.50%	36.70%
KEY 6 % 1st-time, Full-time, Degree-seeking Frsh Earn Degree in 4 Yrs	26.07%	27.76%	29.95%	32.13%	34.32%
7 % 1st-time, Full-time, Degree-seeking White Frsh Earn Degree in 4 Yrs	20.00%	17.60%	66.70%	53.30%	39.40%
8 % 1st-time, Full-time, Degree-seeking Hisp Frsh Earn Degree in 4 Yrs	25.80%	26.12%	27.88%	29.64%	31.40%
9 % 1st-time, Full-time, Degree-seeking Black Frsh Earn Degree in 4 Yrs	0.00%	0.00%	0.00%	0.00%	0.00%
10 % 1st-time, Full-time, Degree-seeking Other Frsh Earn Degree in 4 Yrs	43.48%	20.40%	36.70%	25.00%	36.60%
KEY 11 Persistence Rate - 1st-time, Full-time, Degree-seeking Frsh after 1 Yr	75.83%	77.05%	77.51%	77.96%	78.41%
12 Persistence 1st-time, Full-time, Degree-seeking White Frsh after 1 Yr	50.00%	53.83%	54.35%	54.87%	55.39%

2.D. Summary of Base Request Objective Outcomes
 86th Regular Session, Agency Submission, Version 1
 Automated Budget and Evaluation system of Texas (ABEST)

10/15/2018 2:39:12PM

761 Texas A&M International University

<i>Goal/ Objective / Outcome</i>	Exp 2017	Est 2018	Bud 2019	BL 2020	BL 2021
13 Persistence 1st-time, Full-time, Degree-seeking Hisp Frsh after 1 Yr	75.98%	77.35%	77.88%	78.42%	78.96%
14 Persistence 1st-time, Full-time, Degree-seeking Black Frsh after 1 Yr	66.67%	66.67%	66.67%	66.67%	66.67%
15 Persistence 1st-time, Full-time, Degree-seeking Other Frsh after 1 Yr	85.71%	86.94%	87.92%	88.88%	89.85%
16 Percent of Semester Credit Hours Completed	95.72%	96.00%	96.26%	96.52%	96.77%
KEY 17 Certification Rate of Teacher Education Graduates	91.80%	92.70%	93.35%	94.00%	94.65%
18 Percentage of Underprepared Students Satisfy TSI Obligation in Math	77.89%	79.47%	80.79%	82.11%	83.43%
19 Percentage of Underprepared Students Satisfy TSI Obligation in Writing	85.19%	85.41%	85.63%	85.85%	86.07%
20 Percentage of Underprepared Students Satisfy TSI Obligation in Reading	94.26%	90.38%	91.54%	92.69%	93.85%
KEY 21 % of Baccalaureate Graduates Who Are 1st Generation College Graduates	47.87%	50.00%	50.00%	50.00%	50.00%
KEY 22 % Incoming FT Degree-seeking Undergrad Transfer Students Grad 4 Years	71.86%	73.22%	75.12%	77.02%	78.93%
KEY 23 % Incoming FT Degree-seeking Undergrad Transfer Students Grad 2 Years	16.87%	23.81%	24.39%	24.97%	25.55%
KEY 24 % Lower Division Semester Credit Hours Taught by Tenured/Tenure-Track	34.28%	34.60%	34.96%	35.24%	35.56%
KEY 27 State Licensure Pass Rate of Nursing Graduates	94.00%	94.90%	95.80%	96.70%	97.60%

2.D. Summary of Base Request Objective Outcomes
 86th Regular Session, Agency Submission, Version 1
 Automated Budget and Evaluation system of Texas (ABEST)

10/15/2018 2:39:12PM

761 Texas A&M International University

<i>Goal/ Objective / Outcome</i>	Exp 2017	Est 2018	Bud 2019	BL 2020	BL 2021
KEY 30 Dollar Value of External or Sponsored Research Funds (in Millions)	4.20	4.44	4.68	4.92	5.16
 32 External Research Funds As Percentage Appropriated for Research	0.00%	0.00%	0.00%	0.00%	0.00%

2.E. Summary of Exceptional Items Request
 86th Regular Session, Agency Submission, Version 1
 Automated Budget and Evaluation System of Texas (ABEST)

DATE: 10/15/2018
 TIME : 2:39:13PM

Agency code: 761

Agency name: Texas A&M International University

Priority	Item	2020			2021			Biennium	
		GR and GR/GR Dedicated	All Funds	FTEs	GR and GR Dedicated	All Funds	FTEs	GR and GR Dedicated	All Funds
1	Path to Academic & Student Success	\$2,000,000	\$2,000,000	45.0	\$2,000,000	\$2,000,000	45.0	\$4,000,000	\$4,000,000
2	Add & Reno FPA Instr & Supp Spaces	\$784,662	\$784,662		\$784,662	\$784,662		\$1,569,324	\$1,569,324
3	Student Classroom & Events Center	\$6,538,842	\$6,538,842		\$6,538,842	\$6,538,842		\$13,077,684	\$13,077,684
Total, Exceptional Items Request		\$9,323,504	\$9,323,504	45.0	\$9,323,504	\$9,323,504	45.0	\$18,647,008	\$18,647,008

Method of Financing

General Revenue	\$9,323,504	\$9,323,504		\$9,323,504	\$9,323,504		\$18,647,008	\$18,647,008
General Revenue - Dedicated								
Federal Funds								
Other Funds								
	\$9,323,504	\$9,323,504		\$9,323,504	\$9,323,504		\$18,647,008	\$18,647,008

Full Time Equivalent Positions

45.0

45.0

Number of 100% Federally Funded FTEs

2.F. Summary of Total Request by Strategy
 86th Regular Session, Agency Submission, Version 1
 Automated Budget and Evaluation System of Texas (ABEST)

DATE : 10/15/2018
 TIME : 2:39:13PM

Agency code: 761 Agency name: Texas A&M International University

Goal/Objective/STRATEGY	Base 2020	Base 2021	Exceptional 2020	Exceptional 2021	Total Request 2020	Total Request 2021
1 Provide Instructional and Operations Support						
<i>1 Provide Instructional and Operations Support</i>						
1 OPERATIONS SUPPORT	\$0	\$0	\$0	\$0	\$0	\$0
3 STAFF GROUP INSURANCE PREMIUMS	1,200,832	1,200,832	0	0	1,200,832	1,200,832
4 WORKERS' COMPENSATION INSURANCE	26,391	26,391	0	0	26,391	26,391
5 UNEMPLOYMENT COMPENSATION INSURANCE	199	199	0	0	199	199
6 TEXAS PUBLIC EDUCATION GRANTS	1,285,864	1,285,864	0	0	1,285,864	1,285,864
TOTAL, GOAL 1	\$2,513,286	\$2,513,286	\$0	\$0	\$2,513,286	\$2,513,286
2 Provide Infrastructure Support						
<i>1 Provide Operation and Maintenance of E&G Space</i>						
1 E&G SPACE SUPPORT	0	0	0	0	0	0
2 TUITION REVENUE BOND RETIREMENT	8,591,243	8,575,587	7,323,504	7,323,504	15,914,747	15,899,091
5 SMALL INSTITUTION SUPPLEMENT	0	0	0	0	0	0
TOTAL, GOAL 2	\$8,591,243	\$8,575,587	\$7,323,504	\$7,323,504	\$15,914,747	\$15,899,091

2.F. Summary of Total Request by Strategy
 86th Regular Session, Agency Submission, Version 1
 Automated Budget and Evaluation System of Texas (ABEST)

DATE : 10/15/2018
 TIME : 2:39:13PM

Agency code: 761 Agency name: Texas A&M International University

Goal/Objective/STRATEGY	Base 2020	Base 2021	Exceptional 2020	Exceptional 2021	Total Request 2020	Total Request 2021
3 Provide Non-formula Support						
1 <i>INSTRUCTIONAL SUPPORT</i>						
3 ACADEMIC AND STUDENT SUPPORT	\$1,034,274	\$1,034,273	\$0	\$0	\$1,034,274	\$1,034,273
3 <i>Public Service</i>						
1 INSTITUTE FOR INTERNATIONAL TRADE	296,960	296,959	0	0	296,960	296,959
2 SMALL BUSINESS DEVELOPMENT CENTER	119,381	119,380	0	0	119,381	119,380
4 <i>INSTITUTIONAL SUPPORT</i>						
1 INSTITUTIONAL ENHANCEMENT	4,331,407	4,331,406	0	0	4,331,407	4,331,406
3 OUTREACH AND ENROLLMENT	520,714	520,713	0	0	520,714	520,713
5 <i>Exceptional Item Request</i>						
1 EXCEPTIONAL ITEM REQUEST	0	0	2,000,000	2,000,000	2,000,000	2,000,000
TOTAL, GOAL 3	\$6,302,736	\$6,302,731	\$2,000,000	\$2,000,000	\$8,302,736	\$8,302,731

2.F. Summary of Total Request by Strategy
 86th Regular Session, Agency Submission, Version 1
 Automated Budget and Evaluation System of Texas (ABEST)

DATE : 10/15/2018
 TIME : 2:39:13PM

Agency code: 761 Agency name: Texas A&M International University

Goal/Objective/STRATEGY	Base 2020	Base 2021	Exceptional 2020	Exceptional 2021	Total Request 2020	Total Request 2021
6 Research Funds						
3 <i>Comprehensive Research Fund</i>						
1 COMPREHENSIVE RESEARCH FUND	\$0	\$0	\$0	\$0	\$0	\$0
TOTAL, GOAL 6	\$0	\$0	\$0	\$0	\$0	\$0
TOTAL, AGENCY STRATEGY REQUEST	\$17,407,265	\$17,391,604	\$9,323,504	\$9,323,504	\$26,730,769	\$26,715,108
TOTAL, AGENCY RIDER APPROPRIATIONS REQUEST						
GRAND TOTAL, AGENCY REQUEST	\$17,407,265	\$17,391,604	\$9,323,504	\$9,323,504	\$26,730,769	\$26,715,108

2.F. Summary of Total Request by Strategy
 86th Regular Session, Agency Submission, Version 1
 Automated Budget and Evaluation System of Texas (ABEST)

DATE : 10/15/2018
 TIME : 2:39:13PM

Agency code: 761 Agency name: Texas A&M International University

Goal/Objective/STRATEGY	Base 2020	Base 2021	Exceptional 2020	Exceptional 2021	Total Request 2020	Total Request 2021
General Revenue Funds:						
1 General Revenue Fund	\$14,663,281	\$14,647,619	\$9,323,504	\$9,323,504	\$23,986,785	\$23,971,123
	\$14,663,281	\$14,647,619	\$9,323,504	\$9,323,504	\$23,986,785	\$23,971,123
General Revenue Dedicated Funds:						
704 Est Bd Authorized Tuition Inc	0	0	0	0	0	0
770 Est. Other Educational & General	2,652,197	2,652,198	0	0	2,652,197	2,652,198
	\$2,652,197	\$2,652,198	\$0	\$0	\$2,652,197	\$2,652,198
Other Funds:						
777 Interagency Contracts	91,787	91,787	0	0	91,787	91,787
	\$91,787	\$91,787	\$0	\$0	\$91,787	\$91,787
TOTAL, METHOD OF FINANCING	\$17,407,265	\$17,391,604	\$9,323,504	\$9,323,504	\$26,730,769	\$26,715,108
FULL TIME EQUIVALENT POSITIONS	447.0	447.0	45.0	45.0	492.0	492.0

2.G. Summary of Total Request Objective Outcomes
 86th Regular Session, Agency Submission, Version 1
 Automated Budget and Evaluation system of Texas (ABEST)

Date : 10/15/2018
 Time: 2:39:13PM

Agency code: **761** Agency name: **Texas A&M International University**

Goal/ Objective / Outcome

	BL 2020	BL 2021	Excp 2020	Excp 2021	Total Request 2020	Total Request 2021
1 Provide Instructional and Operations Support						
1 <i>Provide Instructional and Operations Support</i>						
KEY 1 % 1st-time, Full-time, Degree-seeking Frsh Earn Degree in 6 Yrs						
	44.79%	45.27%			44.79%	45.27%
2 % 1st-time, Full-time, Degree-seeking White Frsh Earn Degree in 6 Yrs						
	23.50%	72.20%			23.50%	72.20%
3 % 1st-time, Full-time, Degree-seeking Hisp Frsh Earn Degree in 6 Yrs						
	46.53%	47.35%			46.53%	47.35%
4 % 1st-time, Full-time, Degree-seeking Black Frsh Earn Degree in 6 Yrs						
	33.33%	0.00%			33.33%	0.00%
5 % 1st-time, Full-time, Degree-seeking Other Frshmn Earn Deg in 6 Yrs						
	24.50%	36.70%			24.50%	36.70%
KEY 6 % 1st-time, Full-time, Degree-seeking Frsh Earn Degree in 4 Yrs						
	32.13%	34.32%			32.13%	34.32%
7 % 1st-time, Full-time, Degree-seeking White Frsh Earn Degree in 4 Yrs						
	53.30%	39.40%			53.30%	39.40%
8 % 1st-time, Full-time, Degree-seeking Hisp Frsh Earn Degree in 4 Yrs						
	29.64%	31.40%			29.64%	31.40%

2.G. Summary of Total Request Objective Outcomes
 86th Regular Session, Agency Submission, Version 1
 Automated Budget and Evaluation system of Texas (ABEST)

Date : 10/15/2018

Time: 2:39:13PM

Agency code: 761

Agency name: Texas A&M International University

Goal/ Objective / Outcome

	BL 2020	BL 2021	Excp 2020	Excp 2021	Total Request 2020	Total Request 2021
9 % 1st-time, Full-time, Degree-seeking Black Frsh Earn Degree in 4 Yrs	0.00%	0.00%			0.00%	0.00%
10 % 1st-time, Full-time, Degree-seeking Other Frsh Earn Degree in 4 Yrs	25.00%	36.60%			25.00%	36.60%
KEY 11 Persistence Rate - 1st-time, Full-time, Degree-seeking Frsh after 1 Yr	77.96%	78.41%			77.96%	78.41%
12 Persistence 1st-time, Full-time, Degree-seeking White Frsh after 1 Yr	54.87%	55.39%			54.87%	55.39%
13 Persistence 1st-time, Full-time, Degree-seeking Hisp Frsh after 1 Yr	78.42%	78.96%			78.42%	78.96%
14 Persistence 1st-time, Full-time, Degree-seeking Black Frsh after 1 Yr	66.67%	66.67%			66.67%	66.67%
15 Persistence 1st-time, Full-time, Degree-seeking Other Frsh after 1 Yr	88.88%	89.85%			88.88%	89.85%
16 Percent of Semester Credit Hours Completed	96.52%	96.77%			96.52%	96.77%
KEY 17 Certification Rate of Teacher Education Graduates	94.00%	94.65%			94.00%	94.65%

2.G. Summary of Total Request Objective Outcomes
 86th Regular Session, Agency Submission, Version 1
 Automated Budget and Evaluation system of Texas (ABEST)

Date : 10/15/2018

Time: 2:39:13PM

Agency code: 761

Agency name: Texas A&M International University

Goal/ Objective / Outcome

	BL 2020	BL 2021	Excp 2020	Excp 2021	Total Request 2020	Total Request 2021
18 Percentage of Underprepared Students Satisfy TSI Obligation in Math	82.11%	83.43%			82.11%	83.43%
19 Percentage of Underprepared Students Satisfy TSI Obligation in Writing	85.85%	86.07%			85.85%	86.07%
20 Percentage of Underprepared Students Satisfy TSI Obligation in Reading	92.69%	93.85%			92.69%	93.85%
KEY 21 % of Baccalaureate Graduates Who Are 1st Generation College Graduates	50.00%	50.00%			50.00%	50.00%
KEY 22 % Incoming FT Degree-seeking Undergrad Transfer Students Grad 4 Years	77.02%	78.93%			77.02%	78.93%
KEY 23 % Incoming FT Degree-seeking Undergrad Transfer Students Grad 2 Years	24.97%	25.55%			24.97%	25.55%
KEY 24 % Lower Division Semester Credit Hours Taught by Tenured/Tenure-Track	35.24%	35.56%			35.24%	35.56%
KEY 27 State Licensure Pass Rate of Nursing Graduates	96.70%	97.60%			96.70%	97.60%
KEY 30 Dollar Value of External or Sponsored Research Funds (in Millions)	4.92	5.16			4.92	5.16

2.G. Summary of Total Request Objective Outcomes
 86th Regular Session, Agency Submission, Version 1
 Automated Budget and Evaluation system of Texas (ABEST)

Date : 10/15/2018
 Time: 2:39:13PM

Agency code: **761** Agency name: **Texas A&M International University**

Goal/ Objective / Outcome

**BL
2020**

**BL
2021**

**Excp
2020**

**Excp
2021**

**Total
Request
2020**

**Total
Request
2021**

32 External Research Funds As Percentage Appropriated for Research

0.00%

0.00%

0.00%

0.00%

761 Texas A&M International University

GOAL: 1 Provide Instructional and Operations Support
 OBJECTIVE: 1 Provide Instructional and Operations Support
 STRATEGY: 1 Operations Support

Service Categories:

Service: 19 Income: A.2 Age: B.3

CODE	DESCRIPTION	Exp 2017	Est 2018	Bud 2019	BL 2020 ⁽¹⁾	BL 2021 ⁽¹⁾
Output Measures:						
1	Number of Undergraduate Degrees Awarded	1,053.00	1,141.00	1,193.00	1,246.00	1,298.00
2	Number of Minority Graduates	1,222.00	1,378.00	1,491.00	1,604.00	1,717.00
3	Number of Underprepared Students Who Satisfy TSI Obligation in Math	148.00	166.00	191.00	217.00	242.00
4	Number of Underprepared Students Who Satisfy TSI Obligation in Writing	69.00	66.00	72.00	78.00	84.00
5	Number of Underprepared Students Who Satisfy TSI Obligation in Reading	115.00	118.00	136.00	153.00	171.00
6	Number of Two-Year College Transfers Who Graduate	383.00	393.00	402.00	411.00	420.00
Efficiency Measures:						
KEY 1	Administrative Cost As a Percent of Operating Budget	6.93 %	6.90 %	6.90 %	6.90 %	6.90 %
KEY 2	Avg Cost of Resident Undergraduate Tuition and Fees for 15 SCH	4,086.00	4,160.00	4,319.00	4,439.00	4,439.00
Explanatory/Input Measures:						
1	Student/Faculty Ratio	1.22	1.22	1.22	1.22	1.22
2	Number of Minority Students Enrolled	6,941.00	7,240.00	7,291.00	7,342.00	7,393.00
3	Number of Community College Transfers Enrolled	1,631.00	1,687.00	1,702.00	1,718.00	1,733.00
4	Number of Semester Credit Hours Completed	79,349.00	82,557.00	85,529.00	88,523.00	91,532.00

(1) - Formula funded strategies are not requested in 2020-21 because amounts are not determined by institutions.

761 Texas A&M International University

GOAL: 1 Provide Instructional and Operations Support
 OBJECTIVE: 1 Provide Instructional and Operations Support
 STRATEGY: 1 Operations Support

Service Categories:

Service: 19 Income: A.2 Age: B.3

CODE	DESCRIPTION	Exp 2017	Est 2018	Bud 2019	BL 2020 ⁽¹⁾	BL 2021 ⁽¹⁾
5	Number of Semester Credit Hours	53,312.00	87,632.00	90,787.00	93,964.00	97,159.00
6	Number of Students Enrolled as of the Twelfth Class Day	8,390.00	7,521.00	7,568.00	7,615.00	7,663.00
KEY 7	Average Student Loan Debt	17,349.00	16,352.00	16,937.00	16,937.00	16,937.00
KEY 8	Percent of Students with Student Loan Debt	68.00 %	60.00 %	61.00 %	61.00 %	61.00 %
KEY 9	Average Financial Aid Award Per Full-Time Student	9,246.00	9,533.00	9,628.00	9,628.00	9,628.00
KEY 10	Percent of Full-Time Students Receiving Financial Aid	82.00 %	83.00 %	84.00 %	84.00 %	84.00 %
Objects of Expense:						
1001	SALARIES AND WAGES	\$7,281,561	\$7,905,662	\$7,841,302	\$0	\$0
1002	OTHER PERSONNEL COSTS	\$295,278	\$325,000	\$298,000	\$0	\$0
1005	FACULTY SALARIES	\$10,282,537	\$11,363,280	\$11,314,636	\$0	\$0
2001	PROFESSIONAL FEES AND SERVICES	\$25,000	\$35,000	\$15,000	\$0	\$0
2003	CONSUMABLE SUPPLIES	\$125,286	\$125,000	\$125,000	\$0	\$0
2009	OTHER OPERATING EXPENSE	\$148,072	\$150,000	\$150,000	\$0	\$0
TOTAL, OBJECT OF EXPENSE		\$18,157,734	\$19,903,942	\$19,743,938	\$0	\$0
Method of Financing:						
1	General Revenue Fund	\$12,764,533	\$13,618,725	\$13,644,887	\$0	\$0

(1) - Formula funded strategies are not requested in 2020-21 because amounts are not determined by institutions.

761 Texas A&M International University

GOAL: 1 Provide Instructional and Operations Support
 OBJECTIVE: 1 Provide Instructional and Operations Support
 STRATEGY: 1 Operations Support

Service Categories:

Service: 19 Income: A.2 Age: B.3

CODE	DESCRIPTION	Exp 2017	Est 2018	Bud 2019	BL 2020 ⁽¹⁾	BL 2021 ⁽¹⁾
SUBTOTAL, MOF (GENERAL REVENUE FUNDS)		\$12,764,533	\$13,618,725	\$13,644,887	\$0	\$0
Method of Financing:						
704	Est Bd Authorized Tuition Inc	\$387,939	\$372,438	\$383,627	\$0	\$0
770	Est. Other Educational & General	\$5,005,262	\$5,912,779	\$5,715,424	\$0	\$0
SUBTOTAL, MOF (GENERAL REVENUE FUNDS - DEDICATED)		\$5,393,201	\$6,285,217	\$6,099,051	\$0	\$0
TOTAL, METHOD OF FINANCE (INCLUDING RIDERS)					\$0	\$0
TOTAL, METHOD OF FINANCE (EXCLUDING RIDERS)		\$18,157,734	\$19,903,942	\$19,743,938	\$0	\$0
FULL TIME EQUIVALENT POSITIONS:		249.5	255.7	280.1	277.7	277.7

STRATEGY DESCRIPTION AND JUSTIFICATION:

The Instruction and Operations Formula provides funding for faculty salaries, departmental operating expense, library, instructional administration, research enhancement, student services and institutional support.

The funds are distributed on a weighted semester credit hour basis. The rate per weighted semester credit hour is established by the Legislature each biennium.

(1) - Formula funded strategies are not requested in 2020-21 because amounts are not determined by institutions.

761 Texas A&M International University

GOAL: 1 Provide Instructional and Operations Support
 OBJECTIVE: 1 Provide Instructional and Operations Support
 STRATEGY: 1 Operations Support

Service Categories:

Service: 19 Income: A.2 Age: B.3

CODE	DESCRIPTION	Exp 2017	Est 2018	Bud 2019	BL 2020 ⁽¹⁾	BL 2021 ⁽¹⁾
------	-------------	----------	----------	----------	------------------------	------------------------

EXTERNAL/INTERNAL FACTORS IMPACTING STRATEGY:

EXPLANATION OF BIENNIAL CHANGE (includes Rider amounts):

<u>STRATEGY BIENNIAL TOTAL - ALL FUNDS</u>		<u>BIENNIAL</u>	<u>EXPLANATION OF BIENNIAL CHANGE</u>	
<u>Base Spending (Est 2018 + Bud 2019)</u>	<u>Baseline Request (BL 2020 + BL 2021)</u>	<u>CHANGE</u>	<u>\$ Amount</u>	<u>Explanation(s) of Amount (must specify MOFs and FTEs)</u>
\$39,647,880	\$0	\$(39,647,880)	\$(39,647,880)	Formula Funded Strategies are not required in 2020-21 because amounts are not determined by institutions.
			<u>\$(39,647,880)</u>	Total of Explanation of Biennial Change

(1) - Formula funded strategies are not requested in 2020-21 because amounts are not determined by institutions.

761 Texas A&M International University

GOAL: 1 Provide Instructional and Operations Support
 OBJECTIVE: 1 Provide Instructional and Operations Support
 STRATEGY: 3 Staff Group Insurance Premiums

Service Categories:

Service: 06 Income: A.2 Age: B.3

CODE	DESCRIPTION	Exp 2017	Est 2018	Bud 2019	BL 2020	BL 2021
Objects of Expense:						
2009	OTHER OPERATING EXPENSE	\$864,427	\$923,043	\$1,200,832	\$1,200,832	\$1,200,832
TOTAL, OBJECT OF EXPENSE		\$864,427	\$923,043	\$1,200,832	\$1,200,832	\$1,200,832
Method of Financing:						
770	Est. Other Educational & General	\$864,427	\$923,043	\$1,200,832	\$1,200,832	\$1,200,832
SUBTOTAL, MOF (GENERAL REVENUE FUNDS - DEDICATED)		\$864,427	\$923,043	\$1,200,832	\$1,200,832	\$1,200,832
TOTAL, METHOD OF FINANCE (INCLUDING RIDERS)					\$1,200,832	\$1,200,832
TOTAL, METHOD OF FINANCE (EXCLUDING RIDERS)		\$864,427	\$923,043	\$1,200,832	\$1,200,832	\$1,200,832

FULL TIME EQUIVALENT POSITIONS:

STRATEGY DESCRIPTION AND JUSTIFICATION:

This strategy is to provide proportional share of staff group insurance premiums paid from Other Educational and General funds.

EXTERNAL/INTERNAL FACTORS IMPACTING STRATEGY:

761 Texas A&M International University

GOAL: 1 Provide Instructional and Operations Support
 OBJECTIVE: 1 Provide Instructional and Operations Support
 STRATEGY: 3 Staff Group Insurance Premiums

Service Categories:

Service: 06 Income: A.2 Age: B.3

CODE	DESCRIPTION	Exp 2017	Est 2018	Bud 2019	BL 2020	BL 2021
------	-------------	----------	----------	----------	---------	---------

EXPLANATION OF BIENNIAL CHANGE (includes Rider amounts):

<u>STRATEGY BIENNIAL TOTAL - ALL FUNDS</u>		BIENNIAL	<u>EXPLANATION OF BIENNIAL CHANGE</u>	
Base Spending (Est 2018 + Bud 2019)	Baseline Request (BL 2020 + BL 2021)	CHANGE	\$ Amount	Explanation(s) of Amount (must specify MOFs and FTEs)
\$2,123,875	\$2,401,664	\$277,789	\$277,789	Growth in Group Insurance enrollment.
			\$277,789	Total of Explanation of Biennial Change

761 Texas A&M International University

GOAL: 1 Provide Instructional and Operations Support
 OBJECTIVE: 1 Provide Instructional and Operations Support
 STRATEGY: 4 Workers' Compensation Insurance

Service Categories:

Service: 06 Income: A.2 Age: B.3

CODE	DESCRIPTION	Exp 2017	Est 2018	Bud 2019	BL 2020	BL 2021
Objects of Expense:						
2009	OTHER OPERATING EXPENSE	\$59,448	\$26,391	\$26,391	\$26,391	\$26,391
TOTAL, OBJECT OF EXPENSE		\$59,448	\$26,391	\$26,391	\$26,391	\$26,391
Method of Financing:						
1	General Revenue Fund	\$26,391	\$26,391	\$26,391	\$26,391	\$26,391
SUBTOTAL, MOF (GENERAL REVENUE FUNDS)		\$26,391	\$26,391	\$26,391	\$26,391	\$26,391
Method of Financing:						
770	Est. Other Educational & General	\$33,057	\$0	\$0	\$0	\$0
SUBTOTAL, MOF (GENERAL REVENUE FUNDS - DEDICATED)		\$33,057	\$0	\$0	\$0	\$0
TOTAL, METHOD OF FINANCE (INCLUDING RIDERS)					\$26,391	\$26,391
TOTAL, METHOD OF FINANCE (EXCLUDING RIDERS)		\$59,448	\$26,391	\$26,391	\$26,391	\$26,391
FULL TIME EQUIVALENT POSITIONS:						

761 Texas A&M International University

GOAL: 1 Provide Instructional and Operations Support
 OBJECTIVE: 1 Provide Instructional and Operations Support
 STRATEGY: 4 Workers' Compensation Insurance

Service Categories:

Service: 06 Income: A.2 Age: B.3

CODE	DESCRIPTION	Exp 2017	Est 2018	Bud 2019	BL 2020	BL 2021
------	-------------	----------	----------	----------	---------	---------

STRATEGY DESCRIPTION AND JUSTIFICATION:

The strategy funds the Worker's Compensation payments related to Educational and General funds.

EXTERNAL/INTERNAL FACTORS IMPACTING STRATEGY:

EXPLANATION OF BIENNIAL CHANGE (includes Rider amounts):

<u>STRATEGY BIENNIAL TOTAL - ALL FUNDS</u>		<u>BIENNIAL CHANGE</u>	<u>EXPLANATION OF BIENNIAL CHANGE</u>	
<u>Base Spending (Est 2018 + Bud 2019)</u>	<u>Baseline Request (BL 2020 + BL 2021)</u>		<u>\$ Amount</u>	<u>Explanation(s) of Amount (must specify MOFs and FTEs)</u>
\$52,782	\$52,782	\$0	\$0	No variance.
		\$0		Total of Explanation of Biennial Change

761 Texas A&M International University

GOAL: 1 Provide Instructional and Operations Support
 OBJECTIVE: 1 Provide Instructional and Operations Support
 STRATEGY: 5 Unemployment Compensation Insurance

Service Categories:

Service: 06 Income: A.2 Age: B.3

CODE	DESCRIPTION	Exp 2017	Est 2018	Bud 2019	BL 2020	BL 2021
Objects of Expense:						
1002	OTHER PERSONNEL COSTS	\$10,190	\$199	\$199	\$199	\$199
TOTAL, OBJECT OF EXPENSE		\$10,190	\$199	\$199	\$199	\$199
Method of Financing:						
1	General Revenue Fund	\$199	\$199	\$199	\$199	\$199
SUBTOTAL, MOF (GENERAL REVENUE FUNDS)		\$199	\$199	\$199	\$199	\$199
Method of Financing:						
770	Est. Other Educational & General	\$9,991	\$0	\$0	\$0	\$0
SUBTOTAL, MOF (GENERAL REVENUE FUNDS - DEDICATED)		\$9,991	\$0	\$0	\$0	\$0
TOTAL, METHOD OF FINANCE (INCLUDING RIDERS)					\$199	\$199
TOTAL, METHOD OF FINANCE (EXCLUDING RIDERS)		\$10,190	\$199	\$199	\$199	\$199
FULL TIME EQUIVALENT POSITIONS:						

761 Texas A&M International University

GOAL: 1 Provide Instructional and Operations Support
 OBJECTIVE: 1 Provide Instructional and Operations Support Service Categories:
 STRATEGY: 5 Unemployment Compensation Insurance Service: 06 Income: A.2 Age: B.3

CODE	DESCRIPTION	Exp 2017	Est 2018	Bud 2019	BL 2020	BL 2021
------	-------------	----------	----------	----------	---------	---------

STRATEGY DESCRIPTION AND JUSTIFICATION:

To provide funds for the statutorily mandated unemployment compensation insurance program (Article 8309b, V.A.C.S.). This program provides income continuation for regular employees impacted by reductions in force. The program is part of a total compensation and benefit package that is designed to assist in attracting and retaining quality employees.

EXTERNAL/INTERNAL FACTORS IMPACTING STRATEGY:

EXPLANATION OF BIENNIAL CHANGE (includes Rider amounts):

<u>STRATEGY BIENNIAL TOTAL - ALL FUNDS</u>		<u>BIENNIAL CHANGE</u>	<u>EXPLANATION OF BIENNIAL CHANGE</u>	
<u>Base Spending (Est 2018 + Bud 2019)</u>	<u>Baseline Request (BL 2020 + BL 2021)</u>		<u>\$ Amount</u>	<u>Explanation(s) of Amount (must specify MOFs and FTEs)</u>
\$398	\$398	\$0	\$0	No variance.
			\$0	Total of Explanation of Biennial Change

761 Texas A&M International University

GOAL: 1 Provide Instructional and Operations Support
 OBJECTIVE: 1 Provide Instructional and Operations Support
 STRATEGY: 6 Texas Public Education Grants

Service Categories:

Service: 20 Income: A.2 Age: B.3

CODE	DESCRIPTION	Exp 2017	Est 2018	Bud 2019	BL 2020	BL 2021
Objects of Expense:						
2009	OTHER OPERATING EXPENSE	\$1,278,550	\$1,327,010	\$1,285,864	\$1,285,864	\$1,285,864
TOTAL, OBJECT OF EXPENSE		\$1,278,550	\$1,327,010	\$1,285,864	\$1,285,864	\$1,285,864
Method of Financing:						
770	Est. Other Educational & General	\$1,278,550	\$1,327,010	\$1,285,864	\$1,285,864	\$1,285,864
SUBTOTAL, MOF (GENERAL REVENUE FUNDS - DEDICATED)		\$1,278,550	\$1,327,010	\$1,285,864	\$1,285,864	\$1,285,864
TOTAL, METHOD OF FINANCE (INCLUDING RIDERS)					\$1,285,864	\$1,285,864
TOTAL, METHOD OF FINANCE (EXCLUDING RIDERS)		\$1,278,550	\$1,327,010	\$1,285,864	\$1,285,864	\$1,285,864

FULL TIME EQUIVALENT POSITIONS:

STRATEGY DESCRIPTION AND JUSTIFICATION:

This strategy represents tuition set aside for the Texas Public Education Grants program as required by Section 56.033 of the Texas Education Code.

EXTERNAL/INTERNAL FACTORS IMPACTING STRATEGY:

761 Texas A&M International University

GOAL: 1 Provide Instructional and Operations Support
 OBJECTIVE: 1 Provide Instructional and Operations Support
 STRATEGY: 6 Texas Public Education Grants

Service Categories:

Service: 20 Income: A.2 Age: B.3

CODE	DESCRIPTION	Exp 2017	Est 2018	Bud 2019	BL 2020	BL 2021
------	-------------	----------	----------	----------	---------	---------

EXPLANATION OF BIENNIAL CHANGE (includes Rider amounts):

<u>STRATEGY BIENNIAL TOTAL - ALL FUNDS</u>		BIENNIAL	<u>EXPLANATION OF BIENNIAL CHANGE</u>	
Base Spending (Est 2018 + Bud 2019)	Baseline Request (BL 2020 + BL 2021)	CHANGE	\$ Amount	Explanation(s) of Amount (must specify MOFs and FTEs)
\$2,612,874	\$2,571,728	\$(41,146)	\$(41,146)	Variance in actual expenditures and appropriations.
			<u>\$(41,146)</u>	Total of Explanation of Biennial Change

761 Texas A&M International University

GOAL: 2 Provide Infrastructure Support

OBJECTIVE: 1 Provide Operation and Maintenance of E&G Space

STRATEGY: 1 Educational and General Space Support

Service Categories:

Service: 10

Income: A.2

Age: B.3

CODE	DESCRIPTION	Exp 2017	Est 2018	Bud 2019	BL 2020 ⁽¹⁾	BL 2021 ⁽¹⁾
Efficiency Measures:						
1	Space Utilization Rate of Classrooms	58.00	66.00	64.00	66.00	68.00
2	Space Utilization Rate of Labs	74.00	74.00	75.00	77.00	79.00
Objects of Expense:						
1001	SALARIES AND WAGES	\$2,407,635	\$3,469,054	\$3,469,054	\$0	\$0
2004	UTILITIES	\$1,003,504	\$0	\$0	\$0	\$0
TOTAL, OBJECT OF EXPENSE		\$3,411,139	\$3,469,054	\$3,469,054	\$0	\$0
Method of Financing:						
1	General Revenue Fund	\$2,534,674	\$2,439,661	\$2,444,697	\$0	\$0
SUBTOTAL, MOF (GENERAL REVENUE FUNDS)		\$2,534,674	\$2,439,661	\$2,444,697	\$0	\$0
Method of Financing:						
770	Est. Other Educational & General	\$876,465	\$1,029,393	\$1,024,357	\$0	\$0
SUBTOTAL, MOF (GENERAL REVENUE FUNDS - DEDICATED)		\$876,465	\$1,029,393	\$1,024,357	\$0	\$0

(1) - Formula funded strategies are not requested in 2020-21 because amounts are not determined by institutions.

761 Texas A&M International University

GOAL: 2 Provide Infrastructure Support
 OBJECTIVE: 1 Provide Operation and Maintenance of E&G Space
 STRATEGY: 1 Educational and General Space Support

Service Categories:
 Service: 10 Income: A.2 Age: B.3

CODE	DESCRIPTION	Exp 2017	Est 2018	Bud 2019	BL 2020 ⁽¹⁾	BL 2021 ⁽¹⁾
TOTAL, METHOD OF FINANCE (INCLUDING RIDERS)					\$0	\$0
TOTAL, METHOD OF FINANCE (EXCLUDING RIDERS)		\$3,411,139	\$3,469,054	\$3,469,054	\$0	\$0
FULL TIME EQUIVALENT POSITIONS:		50.9	48.0	48.0	50.8	50.8

STRATEGY DESCRIPTION AND JUSTIFICATION:

The Infrastructure Support formula distributes funding associated with plant-related formulas and utilities. This formula is driven by the predicted square feet for universities' educational and general activities produced by the Coordinating Board Space Projection Model.

The portion of the formula related to utilities is adjusted to reflect differences in unit costs for purchased utilities, including electricity, natural gas, water and wastewater, and thermal energy.

EXTERNAL/INTERNAL FACTORS IMPACTING STRATEGY:

(1) - Formula funded strategies are not requested in 2020-21 because amounts are not determined by institutions.

761 Texas A&M International University

GOAL: 2 Provide Infrastructure Support
 OBJECTIVE: 1 Provide Operation and Maintenance of E&G Space
 STRATEGY: 1 Educational and General Space Support

Service Categories:
 Service: 10 Income: A.2 Age: B.3

CODE	DESCRIPTION	Exp 2017	Est 2018	Bud 2019	BL 2020 ⁽¹⁾	BL 2021 ⁽¹⁾
------	-------------	----------	----------	----------	------------------------	------------------------

EXPLANATION OF BIENNIAL CHANGE (includes Rider amounts):

<u>STRATEGY BIENNIAL TOTAL - ALL FUNDS</u>		BIENNIAL	<u>EXPLANATION OF BIENNIAL CHANGE</u>	
Base Spending (Est 2018 + Bud 2019)	Baseline Request (BL 2020 + BL 2021)	CHANGE	\$ Amount	Explanation(s) of Amount (must specify MOFs and FTEs)
\$6,938,108	\$0	\$(6,938,108)	\$(6,938,108)	Formula Funded Strategies are not requested in 2020-21 because amounts are not determined by institutions.
			<u>\$(6,938,108)</u>	Total of Explanation of Biennial Change

(1) - Formula funded strategies are not requested in 2020-21 because amounts are not determined by institutions.

761 Texas A&M International University

GOAL: 2 Provide Infrastructure Support
 OBJECTIVE: 1 Provide Operation and Maintenance of E&G Space
 STRATEGY: 2 Tuition Revenue Bond Retirement

Service Categories:
 Service: 10 Income: A.2 Age: B.3

CODE	DESCRIPTION	Exp 2017	Est 2018	Bud 2019	BL 2020	BL 2021
Objects of Expense:						
2008	DEBT SERVICE	\$10,919,798	\$8,660,091	\$8,656,767	\$8,591,243	\$8,575,587
TOTAL, OBJECT OF EXPENSE		\$10,919,798	\$8,660,091	\$8,656,767	\$8,591,243	\$8,575,587
Method of Financing:						
1	General Revenue Fund	\$10,919,798	\$8,660,091	\$8,656,767	\$8,591,243	\$8,575,587
SUBTOTAL, MOF (GENERAL REVENUE FUNDS)		\$10,919,798	\$8,660,091	\$8,656,767	\$8,591,243	\$8,575,587
TOTAL, METHOD OF FINANCE (INCLUDING RIDERS)					\$8,591,243	\$8,575,587
TOTAL, METHOD OF FINANCE (EXCLUDING RIDERS)		\$10,919,798	\$8,660,091	\$8,656,767	\$8,591,243	\$8,575,587

FULL TIME EQUIVALENT POSITIONS:

STRATEGY DESCRIPTION AND JUSTIFICATION:

The funding of TRB retirement covers the cost of existing buildings on campus.

EXTERNAL/INTERNAL FACTORS IMPACTING STRATEGY:

761 Texas A&M International University

GOAL: 2 Provide Infrastructure Support
 OBJECTIVE: 1 Provide Operation and Maintenance of E&G Space
 STRATEGY: 2 Tuition Revenue Bond Retirement

Service Categories:
 Service: 10 Income: A.2 Age: B.3

CODE	DESCRIPTION	Exp 2017	Est 2018	Bud 2019	BL 2020	BL 2021
------	-------------	----------	----------	----------	---------	---------

EXPLANATION OF BIENNIAL CHANGE (includes Rider amounts):

<u>STRATEGY BIENNIAL TOTAL - ALL FUNDS</u>		<u>BIENNIAL</u>	<u>EXPLANATION OF BIENNIAL CHANGE</u>	
Base Spending (Est 2018 + Bud 2019)	Baseline Request (BL 2020 + BL 2021)	CHANGE	\$ Amount	Explanation(s) of Amount (must specify MOFs and FTEs)
\$17,316,858	\$17,166,830	\$(150,028)	\$(150,028)	Decrease in debt service payments for FY 20 & FY 21 because several TRB projects will be paid off in FY 2019.
			\$(150,028)	Total of Explanation of Biennial Change

761 Texas A&M International University

GOAL: 2 Provide Infrastructure Support
 OBJECTIVE: 1 Provide Operation and Maintenance of E&G Space
 STRATEGY: 5 Small Institution Supplement

Service Categories:
 Service: 19 Income: A.2 Age: B.3

CODE	DESCRIPTION	Exp 2017	Est 2018	Bud 2019	BL 2020 ⁽¹⁾	BL 2021 ⁽¹⁾
Objects of Expense:						
1005	FACULTY SALARIES	\$366,900	\$391,500	\$391,500	\$0	\$0
TOTAL, OBJECT OF EXPENSE		\$366,900	\$391,500	\$391,500	\$0	\$0
Method of Financing:						
1	General Revenue Fund	\$366,900	\$391,500	\$391,500	\$0	\$0
SUBTOTAL, MOF (GENERAL REVENUE FUNDS)		\$366,900	\$391,500	\$391,500	\$0	\$0
TOTAL, METHOD OF FINANCE (INCLUDING RIDERS)					\$0	\$0
TOTAL, METHOD OF FINANCE (EXCLUDING RIDERS)		\$366,900	\$391,500	\$391,500	\$0	\$0
FULL TIME EQUIVALENT POSITIONS:		10.9	8.2	8.2	8.2	8.2

STRATEGY DESCRIPTION AND JUSTIFICATION:

The small institution supplement funding assists growing universities as they transition from small to mid-size universities.

EXTERNAL/INTERNAL FACTORS IMPACTING STRATEGY:

(1) - Formula funded strategies are not requested in 2020-21 because amounts are not determined by institutions.

761 Texas A&M International University

GOAL: 2 Provide Infrastructure Support
 OBJECTIVE: 1 Provide Operation and Maintenance of E&G Space
 STRATEGY: 5 Small Institution Supplement

Service Categories:
 Service: 19 Income: A.2 Age: B.3

CODE	DESCRIPTION	Exp 2017	Est 2018	Bud 2019	BL 2020 ⁽¹⁾	BL 2021 ⁽¹⁾
------	-------------	----------	----------	----------	------------------------	------------------------

EXPLANATION OF BIENNIAL CHANGE (includes Rider amounts):

<u>STRATEGY BIENNIAL TOTAL - ALL FUNDS</u>		BIENNIAL	<u>EXPLANATION OF BIENNIAL CHANGE</u>	
Base Spending (Est 2018 + Bud 2019)	Baseline Request (BL 2020 + BL 2021)	CHANGE	\$ Amount	Explanation(s) of Amount (must specify MOFs and FTEs)
\$783,000	\$0	\$(783,000)	\$(783,000)	Formula Funded Strategies are not requested in 2020-21 because amounts are not determined by institutions.
			\$(783,000)	Total of Explanation of Biennial Change

(1) - Formula funded strategies are not requested in 2020-21 because amounts are not determined by institutions.

761 Texas A&M International University

GOAL: 3 Provide Non-formula Support
 OBJECTIVE: 1 INSTRUCTIONAL SUPPORT
 STRATEGY: 3 Academic and Student Support

Service Categories:

Service: 19 Income: A.2 Age: B.3

CODE	DESCRIPTION	Exp 2017	Est 2018	Bud 2019	BL 2020	BL 2021
Objects of Expense:						
1005	FACULTY SALARIES	\$1,998,949	\$1,034,274	\$1,034,273	\$1,034,274	\$1,034,273
TOTAL, OBJECT OF EXPENSE		\$1,998,949	\$1,034,274	\$1,034,273	\$1,034,274	\$1,034,273
Method of Financing:						
1	General Revenue Fund	\$1,841,015	\$1,034,274	\$1,034,273	\$1,034,274	\$1,034,273
SUBTOTAL, MOF (GENERAL REVENUE FUNDS)		\$1,841,015	\$1,034,274	\$1,034,273	\$1,034,274	\$1,034,273
Method of Financing:						
770	Est. Other Educational & General	\$157,934	\$0	\$0	\$0	\$0
SUBTOTAL, MOF (GENERAL REVENUE FUNDS - DEDICATED)		\$157,934	\$0	\$0	\$0	\$0
TOTAL, METHOD OF FINANCE (INCLUDING RIDERS)					\$1,034,274	\$1,034,273
TOTAL, METHOD OF FINANCE (EXCLUDING RIDERS)		\$1,998,949	\$1,034,274	\$1,034,273	\$1,034,274	\$1,034,273
FULL TIME EQUIVALENT POSITIONS:		20.9	14.4	14.4	15.0	15.0

761 Texas A&M International University

GOAL: 3 Provide Non-formula Support
 OBJECTIVE: 1 INSTRUCTIONAL SUPPORT Service Categories:
 STRATEGY: 3 Academic and Student Support Service: 19 Income: A.2 Age: B.3

CODE	DESCRIPTION	Exp 2017	Est 2018	Bud 2019	BL 2020	BL 2021
------	-------------	----------	----------	----------	---------	---------

STRATEGY DESCRIPTION AND JUSTIFICATION:

Academic and Student Support provides resources to recruit and retain faculty to provide students with a quality education, along with student scholarships and assistantships.

EXTERNAL/INTERNAL FACTORS IMPACTING STRATEGY:

Academic and Student Support represents 5% of the University’s total appropriations and funds 6% of E&G faculty. It is base funding for the University. Over the next two years, this special item funding will be used to retain and recruit faculty members and to provide opportunities for them to engage in sponsored research, which will increase revenues to the State of Texas. In addition, the funding of these faculty positions helps decrease our reliance on adjunct faculty, which is critical for maintaining and improving persistence rates for first- and second-year students.

Additional information on Academic and Student Support is available in Schedule 9, Non-Formula Support Information.

EXPLANATION OF BIENNIAL CHANGE (includes Rider amounts):

<u>STRATEGY BIENNIAL TOTAL - ALL FUNDS</u>		<u>BIENNIAL</u>	<u>EXPLANATION OF BIENNIAL CHANGE</u>	
Base Spending (Est 2018 + Bud 2019)	Baseline Request (BL 2020 + BL 2021)	CHANGE	\$ Amount	Explanation(s) of Amount (must specify MOFs and FTEs)
\$2,068,547	\$2,068,547	\$0	\$0	No Variance. Baseline Funding and FTE requests to remain the same to continue to support ongoing initiatives and programs.
			\$0	Total of Explanation of Biennial Change

761 Texas A&M International University

GOAL: 3 Provide Non-formula Support
 OBJECTIVE: 3 Public Service
 STRATEGY: 1 Institute for International Trade

Service Categories:

Service: 13 Income: A.2 Age: B.3

CODE	DESCRIPTION	Exp 2017	Est 2018	Bud 2019	BL 2020	BL 2021
Objects of Expense:						
1001	SALARIES AND WAGES	\$290,395	\$294,749	\$299,170	\$296,960	\$296,959
2001	PROFESSIONAL FEES AND SERVICES	\$12,241	\$0	\$0	\$0	\$0
2003	CONSUMABLE SUPPLIES	\$1,194	\$0	\$0	\$0	\$0
2005	TRAVEL	\$2,336	\$0	\$0	\$0	\$0
2009	OTHER OPERATING EXPENSE	\$7,803	\$0	\$0	\$0	\$0
TOTAL, OBJECT OF EXPENSE		\$313,969	\$294,749	\$299,170	\$296,960	\$296,959
Method of Financing:						
1	General Revenue Fund	\$57,140	\$39,672	\$39,670	\$39,672	\$39,670
SUBTOTAL, MOF (GENERAL REVENUE FUNDS)		\$57,140	\$39,672	\$39,670	\$39,672	\$39,670
Method of Financing:						
770	Est. Other Educational & General	\$118,942	\$163,290	\$167,713	\$165,501	\$165,502
SUBTOTAL, MOF (GENERAL REVENUE FUNDS - DEDICATED)		\$118,942	\$163,290	\$167,713	\$165,501	\$165,502
Method of Financing:						
777	Interagency Contracts	\$137,887	\$91,787	\$91,787	\$91,787	\$91,787

761 Texas A&M International University

GOAL: 3 Provide Non-formula Support
 OBJECTIVE: 3 Public Service
 STRATEGY: 1 Institute for International Trade

Service Categories:

Service: 13 Income: A.2 Age: B.3

CODE	DESCRIPTION	Exp 2017	Est 2018	Bud 2019	BL 2020	BL 2021
SUBTOTAL, MOF (OTHER FUNDS)		\$137,887	\$91,787	\$91,787	\$91,787	\$91,787
TOTAL, METHOD OF FINANCE (INCLUDING RIDERS)					\$296,960	\$296,959
TOTAL, METHOD OF FINANCE (EXCLUDING RIDERS)		\$313,969	\$294,749	\$299,170	\$296,960	\$296,959
FULL TIME EQUIVALENT POSITIONS:		6.5	5.5	5.5	5.5	5.5

STRATEGY DESCRIPTION AND JUSTIFICATION:

The Institute supports the international mission of the University by collecting and publishing economic indicators for the Texas -Mexico border region, promoting research on international trade and related issues, and encouraging scholarly productivity of its faculty and students. This funding has made possible the establishment of a database containing monthly border trade, including vehicular, passenger, truck, rail and pedestrian traffic on all major Texas-Mexico border points of entry. This information is available to business, government agencies, other institutions and the general public. The funding also supports numerous studies and research monographs and publications dealing with economic development and competitiveness of the border region.

EXTERNAL/INTERNAL FACTORS IMPACTING STRATEGY:

761 Texas A&M International University

GOAL: 3 Provide Non-formula Support
 OBJECTIVE: 3 Public Service
 STRATEGY: 1 Institute for International Trade

Service Categories:
 Service: 13 Income: A.2 Age: B.3

CODE	DESCRIPTION	Exp 2017	Est 2018	Bud 2019	BL 2020	BL 2021
------	-------------	----------	----------	----------	---------	---------

The Institute will continue to publish the highly regarded International Trade Journal and will create a database for manuscript submissions and acceptance information for the Journal. The Institute is also working on a partnership with Taylor & Francis/Routledge, the Journal's current publishers, to get the Journal into the Social Science Citation Index which provides researchers and students with access to bibliographic and citation information needed to find research data, journals and researchers. The Institute will also expand cross-border relationships with Mexican and Central American businesses and continue to provide research opportunities in international business for faculty. As the Institute matures and becomes more established in the academic community, it will be able to attract higher level scholars, elevating the scholarly standing of the University. Its International Trade Journal, already well-established in its 30th year of publication, should continue to become increasingly selective and more widely known.

Additional information on the Institute for International Trade is available in Schedule 9, Non-Formula Support Information.

EXPLANATION OF BIENNIAL CHANGE (includes Rider amounts):

<u>STRATEGY BIENNIAL TOTAL - ALL FUNDS</u>		<u>BIENNIAL</u>	<u>EXPLANATION OF BIENNIAL CHANGE</u>	
Base Spending (Est 2018 + Bud 2019)	Baseline Request (BL 2020 + BL 2021)	CHANGE	\$ Amount	Explanation(s) of Amount (must specify MOFs and FTEs)
\$593,919	\$593,919	\$0	\$0	No Variance. Baseline Funding and FTE requests to remain the same to continue to support ongoing initiatives and programs.
			\$0	Total of Explanation of Biennial Change

761 Texas A&M International University

GOAL: 3 Provide Non-formula Support
 OBJECTIVE: 3 Public Service
 STRATEGY: 2 Small Business Development Center

Service Categories:
 Service: 13 Income: A.2 Age: B.3

CODE	DESCRIPTION	Exp 2017	Est 2018	Bud 2019	BL 2020	BL 2021
Objects of Expense:						
1001	SALARIES AND WAGES	\$181,500	\$119,381	\$119,380	\$119,381	\$119,380
TOTAL, OBJECT OF EXPENSE		\$181,500	\$119,381	\$119,380	\$119,381	\$119,380
Method of Financing:						
1	General Revenue Fund	\$181,500	\$119,381	\$119,380	\$119,381	\$119,380
SUBTOTAL, MOF (GENERAL REVENUE FUNDS)		\$181,500	\$119,381	\$119,380	\$119,381	\$119,380
TOTAL, METHOD OF FINANCE (INCLUDING RIDERS)					\$119,381	\$119,380
TOTAL, METHOD OF FINANCE (EXCLUDING RIDERS)		\$181,500	\$119,381	\$119,380	\$119,381	\$119,380
FULL TIME EQUIVALENT POSITIONS:		2.9	1.9	1.9	1.9	1.9

STRATEGY DESCRIPTION AND JUSTIFICATION:

The Small Business Development Center offers services which promote the growth, expansion, innovation, increased productivity, and improved management for small businesses. These services, which include individual business counseling and technical assistance, group training seminars and workshops, advocacy, and research information, not only facilitate new business start-ups and help existing business expand, but also strengthen the economies of Webb, Zapata and Jim Hogg counties.

761 Texas A&M International University

GOAL: 3 Provide Non-formula Support
 OBJECTIVE: 3 Public Service
 STRATEGY: 2 Small Business Development Center

Service Categories:
 Service: 13 Income: A.2 Age: B.3

CODE	DESCRIPTION	Exp 2017	Est 2018	Bud 2019	BL 2020	BL 2021
------	-------------	----------	----------	----------	---------	---------

EXTERNAL/INTERNAL FACTORS IMPACTING STRATEGY:

The South-West Texas Border Small Business Development Center (SBDC) Network provides consulting and technical assistance to the small business community in Webb, Zapata, and Jim Hogg Counties. The goal is to help start and grow small businesses in the region.

- The mission of the SBDC is to aid entrepreneurs in creating regional economic growth through development and expansion of small businesses by fostering innovation, increased productivity, and improved management.
- The Eagle Ford Shale has generated an enormous economic impact in the region, and there is no sign of it diminishing in the near future.
- Entrepreneurs offer new ideas and services in many areas, including road expansion and maintenance, housing, food service, and more.
- New and expanded small businesses will increase employment opportunities in the region.
- Allows for development of new partnerships with local financial institutions who will fund these entrepreneurial efforts .

Additional information on the Small Business Development Center is available in Schedule 9, Non-Formula Support Information.

EXPLANATION OF BIENNIAL CHANGE (includes Rider amounts):

<u>STRATEGY BIENNIAL TOTAL - ALL FUNDS</u>		<u>BIENNIAL</u>	<u>EXPLANATION OF BIENNIAL CHANGE</u>	
Base Spending (Est 2018 + Bud 2019)	Baseline Request (BL 2020 + BL 2021)	CHANGE	\$ Amount	Explanation(s) of Amount (must specify MOFs and FTEs)
\$238,761	\$238,761	\$0	\$0	No Variance. Baseline Funding and FTE requests to remain the same to continue to support ongoing initiatives and programs.
			\$0	Total of Explanation of Biennial Change

761 Texas A&M International University

GOAL: 3 Provide Non-formula Support
 OBJECTIVE: 4 INSTITUTIONAL SUPPORT
 STRATEGY: 1 Institutional Enhancement

Service Categories:
 Service: 19 Income: A.2 Age: B.3

CODE	DESCRIPTION	Exp 2017	Est 2018	Bud 2019	BL 2020	BL 2021
Objects of Expense:						
1005	FACULTY SALARIES	\$6,082,897	\$4,331,407	\$4,331,406	\$4,331,407	\$4,331,406
TOTAL, OBJECT OF EXPENSE		\$6,082,897	\$4,331,407	\$4,331,406	\$4,331,407	\$4,331,406
Method of Financing:						
1	General Revenue Fund	\$5,926,726	\$4,331,407	\$4,331,406	\$4,331,407	\$4,331,406
SUBTOTAL, MOF (GENERAL REVENUE FUNDS)		\$5,926,726	\$4,331,407	\$4,331,406	\$4,331,407	\$4,331,406
Method of Financing:						
770	Est. Other Educational & General	\$156,171	\$0	\$0	\$0	\$0
SUBTOTAL, MOF (GENERAL REVENUE FUNDS - DEDICATED)		\$156,171	\$0	\$0	\$0	\$0
TOTAL, METHOD OF FINANCE (INCLUDING RIDERS)					\$4,331,407	\$4,331,406
TOTAL, METHOD OF FINANCE (EXCLUDING RIDERS)		\$6,082,897	\$4,331,407	\$4,331,406	\$4,331,407	\$4,331,406
FULL TIME EQUIVALENT POSITIONS:		84.2	72.7	72.7	73.0	73.0

761 Texas A&M International University

GOAL: 3 Provide Non-formula Support
 OBJECTIVE: 4 INSTITUTIONAL SUPPORT
 STRATEGY: 1 Institutional Enhancement

Service Categories:

Service: 19 Income: A.2 Age: B.3

CODE	DESCRIPTION	Exp 2017	Est 2018	Bud 2019	BL 2020	BL 2021
------	-------------	----------	----------	----------	---------	---------

STRATEGY DESCRIPTION AND JUSTIFICATION:

The 74th Texas Legislature authorized an expansion of the University to 4-year status in fall, 1995. The South Texas Border Initiative supported the hiring of faculty and staff to handle the rapid growth in enrollment and the expansion of academic programs. Institutional Enhancement currently funds 19% of the University’s total appropriation and 41% of E&G faculty. It represents a significant portion of base funding.

EXTERNAL/INTERNAL FACTORS IMPACTING STRATEGY:

As mentioned above, Institutional Enhancement represents 19% of the University’s total appropriations, funds 41% of E&G faculty, and is a significant portion of the University’s base funding. Over the next two years, this special item funding will be used to retain and recruit faculty members and to provide opportunities for them to engage in sponsored research, which will increase revenues to the State of Texas. In addition, the funding of these faculty positions helps decrease our reliance on adjunct faculty, which is critical for maintaining and improving persistence rates for first-and second-year students.

Additional information on Institutional Enhancement is available in Schedule 9, Non-Formula Support Information.

761 Texas A&M International University

GOAL: 3 Provide Non-formula Support
 OBJECTIVE: 4 INSTITUTIONAL SUPPORT
 STRATEGY: 1 Institutional Enhancement

Service Categories:

Service: 19 Income: A.2 Age: B.3

CODE	DESCRIPTION	Exp 2017	Est 2018	Bud 2019	BL 2020	BL 2021
------	-------------	----------	----------	----------	---------	---------

EXPLANATION OF BIENNIAL CHANGE (includes Rider amounts):

<u>STRATEGY BIENNIAL TOTAL - ALL FUNDS</u>		BIENNIAL	<u>EXPLANATION OF BIENNIAL CHANGE</u>	
Base Spending (Est 2018 + Bud 2019)	Baseline Request (BL 2020 + BL 2021)	CHANGE	\$ Amount	Explanation(s) of Amount (must specify MOFs and FTEs)
\$8,662,813	\$8,662,813	\$0	\$0	No Variance. Baseline Funding and FTE requests to remain the same to continue to support ongoing initiatives and programs.
			\$0	Total of Explanation of Biennial Change

761 Texas A&M International University

GOAL: 3 Provide Non-formula Support
 OBJECTIVE: 4 INSTITUTIONAL SUPPORT
 STRATEGY: 3 Outreach and Enrollment

Service Categories:

Service: 19 Income: A.2 Age: B.3

CODE	DESCRIPTION	Exp 2017	Est 2018	Bud 2019	BL 2020	BL 2021
Objects of Expense:						
1001	SALARIES AND WAGES	\$520,145	\$278,597	\$274,965	\$274,966	\$274,965
1005	FACULTY SALARIES	\$229,855	\$242,117	\$245,748	\$245,748	\$245,748
TOTAL, OBJECT OF EXPENSE		\$750,000	\$520,714	\$520,713	\$520,714	\$520,713
Method of Financing:						
1	General Revenue Fund	\$750,000	\$520,714	\$520,713	\$520,714	\$520,713
SUBTOTAL, MOF (GENERAL REVENUE FUNDS)		\$750,000	\$520,714	\$520,713	\$520,714	\$520,713
TOTAL, METHOD OF FINANCE (INCLUDING RIDERS)					\$520,714	\$520,713
TOTAL, METHOD OF FINANCE (EXCLUDING RIDERS)		\$750,000	\$520,714	\$520,713	\$520,714	\$520,713
FULL TIME EQUIVALENT POSITIONS:		16.5	11.9	11.9	12.0	12.0

STRATEGY DESCRIPTION AND JUSTIFICATION:

The University prepares students for success through an aggressive outreach to local and regional schools, establishing one-on-one relationships to guide high school students through the financial aid process. Upon entering the University, a comprehensive program of advisement and academic support ensures retention and timely graduation. This funding enables the University to provide non-traditional students with the environment and tools necessary for success and makes Closing the Gaps possible. The resources provided by this funding enable the State's underserved population to become productive participants in the Texas economy.

761 Texas A&M International University

GOAL: 3 Provide Non-formula Support
 OBJECTIVE: 4 INSTITUTIONAL SUPPORT Service Categories:
 STRATEGY: 3 Outreach and Enrollment Service: 19 Income: A.2 Age: B.3

CODE	DESCRIPTION	Exp 2017	Est 2018	Bud 2019	BL 2020	BL 2021
------	-------------	----------	----------	----------	---------	---------

EXTERNAL/INTERNAL FACTORS IMPACTING STRATEGY:

- TAMIU will increase outreach to high school students beyond a 120 mile radius of the University therefore increasing overall student enrollment and semester credit hour production.
- Increased offerings of required supplemental instruction for challenging core courses resulting in increased GPA and increased retention rates .
- Expansion of summer academic boot camp offerings in mathematics and writing.
- Initiation of HB 5 College Prep Courses in mathematics and language arts made possible because of TAMIU with local area high schools and local community college.
- Expanded Texas Success Initiative Assessment (TSIA) testing in area high schools to increase participation and college readiness.
- Offer more diverse Freshman Seminar course options in the core curriculum that include service learning, honors, study abroad, and study away experiences.

Additional information on Outreach and Enrollment is available in Schedule 9, Non-Formula Support information.

EXPLANATION OF BIENNIAL CHANGE (includes Rider amounts):

<u>STRATEGY BIENNIAL TOTAL - ALL FUNDS</u>		<u>BIENNIAL</u>	<u>EXPLANATION OF BIENNIAL CHANGE</u>	
<u>Base Spending (Est 2018 + Bud 2019)</u>	<u>Baseline Request (BL 2020 + BL 2021)</u>	<u>CHANGE</u>	<u>\$ Amount</u>	<u>Explanation(s) of Amount (must specify MOFs and FTEs)</u>
\$1,041,427	\$1,041,427	\$0	\$0	No Variance. Baseline Funding and FTE requests to remain the same to continue to support ongoing initiatives and programs.
			\$0	Total of Explanation of Biennial Change

761 Texas A&M International University

GOAL: 3 Provide Non-formula Support
 OBJECTIVE: 5 Exceptional Item Request
 STRATEGY: 1 Exceptional Item Request

Service Categories:
 Service: 19 Income: A.2 Age: B.3

CODE	DESCRIPTION	Exp 2017	Est 2018	Bud 2019	BL 2020	BL 2021
Objects of Expense:						
1001	SALARIES AND WAGES	\$0	\$0	\$0	\$0	\$0
1005	FACULTY SALARIES	\$0	\$0	\$0	\$0	\$0
TOTAL, OBJECT OF EXPENSE		\$0	\$0	\$0	\$0	\$0
Method of Financing:						
1	General Revenue Fund	\$0	\$0	\$0	\$0	\$0
SUBTOTAL, MOF (GENERAL REVENUE FUNDS)		\$0	\$0	\$0	\$0	\$0
TOTAL, METHOD OF FINANCE (INCLUDING RIDERS)					\$0	\$0
TOTAL, METHOD OF FINANCE (EXCLUDING RIDERS)		\$0	\$0	\$0	\$0	\$0
FULL TIME EQUIVALENT POSITIONS:		0.0	0.0	0.0	0.0	0.0
STRATEGY DESCRIPTION AND JUSTIFICATION:						

761 Texas A&M International University

GOAL: 3 Provide Non-formula Support
 OBJECTIVE: 5 Exceptional Item Request
 STRATEGY: 1 Exceptional Item Request

Service Categories:
 Service: 19 Income: A.2 Age: B.3

CODE	DESCRIPTION	Exp 2017	Est 2018	Bud 2019	BL 2020	BL 2021
------	-------------	----------	----------	----------	---------	---------

EXTERNAL/INTERNAL FACTORS IMPACTING STRATEGY:

EXPLANATION OF BIENNIAL CHANGE (includes Rider amounts):

<u>STRATEGY BIENNIAL TOTAL - ALL FUNDS</u>		<u>BIENNIAL CHANGE</u>	<u>EXPLANATION OF BIENNIAL CHANGE</u>	
<u>Base Spending (Est 2018 + Bud 2019)</u>	<u>Baseline Request (BL 2020 + BL 2021)</u>		<u>\$ Amount</u>	<u>Explanation(s) of Amount (must specify MOFs and FTEs)</u>
\$0	\$0	\$0	\$0	Total of Explanation of Biennial Change

761 Texas A&M International University

GOAL: 6 Research Funds
 OBJECTIVE: 3 Comprehensive Research Fund
 STRATEGY: 1 Comprehensive Research Fund

Service Categories:
 Service: 21 Income: A.2 Age: B.3

CODE	DESCRIPTION	Exp 2017	Est 2018	Bud 2019	BL 2020	BL 2021
Objects of Expense:						
1001	SALARIES AND WAGES	\$213,309	\$152,586	\$152,586	\$0	\$0
TOTAL, OBJECT OF EXPENSE		\$213,309	\$152,586	\$152,586	\$0	\$0
Method of Financing:						
1	General Revenue Fund	\$213,309	\$152,586	\$152,586	\$0	\$0
SUBTOTAL, MOF (GENERAL REVENUE FUNDS)		\$213,309	\$152,586	\$152,586	\$0	\$0
TOTAL, METHOD OF FINANCE (INCLUDING RIDERS)					\$0	\$0
TOTAL, METHOD OF FINANCE (EXCLUDING RIDERS)		\$213,309	\$152,586	\$152,586	\$0	\$0
FULL TIME EQUIVALENT POSITIONS:		2.9	2.9	2.9	2.9	2.9

STRATEGY DESCRIPTION AND JUSTIFICATION:

EXTERNAL/INTERNAL FACTORS IMPACTING STRATEGY:

761 Texas A&M International University

GOAL: 6 Research Funds
 OBJECTIVE: 3 Comprehensive Research Fund
 STRATEGY: 1 Comprehensive Research Fund

Service Categories:
 Service: 21 Income: A.2 Age: B.3

CODE	DESCRIPTION	Exp 2017	Est 2018	Bud 2019	BL 2020	BL 2021
------	-------------	----------	----------	----------	---------	---------

EXPLANATION OF BIENNIAL CHANGE (includes Rider amounts):

<u>STRATEGY BIENNIAL TOTAL - ALL FUNDS</u>		BIENNIAL	<u>EXPLANATION OF BIENNIAL CHANGE</u>	
Base Spending (Est 2018 + Bud 2019)	Baseline Request (BL 2020 + BL 2021)	CHANGE	\$ Amount	Explanation(s) of Amount (must specify MOFs and FTEs)
\$305,172	\$0	\$(305,172)	\$(305,172)	Comprehensive Research Fund Strategy are not requested in 2020-21 because amounts are not determined by institution.
			\$(305,172)	Total of Explanation of Biennial Change

SUMMARY TOTALS:

OBJECTS OF EXPENSE:	\$44,608,810	\$41,154,341	\$41,232,073	\$17,407,265	\$17,391,604
METHODS OF FINANCE (INCLUDING RIDERS):				\$17,407,265	\$17,391,604
METHODS OF FINANCE (EXCLUDING RIDERS):	\$44,608,810	\$41,154,341	\$41,232,073	\$17,407,265	\$17,391,604
FULL TIME EQUIVALENT POSITIONS:	445.2	421.2	445.6	447.0	447.0

3.A.1. PROGRAM-LEVEL REQUEST SCHEDULE
85th Regular Session, Agency Submission, Version 1

Agency Code: 761		Agency: Texas A&M International University				Prepared By: Fred Juarez					
Date: 10/16/2018						18-19	Requested	Requested	Biennial Total	Biennial Difference	
Goal	Goal Name	Strategy	Strategy Name	Program	Program Name	Base	2020	2021	20-21	\$	%
A	Instruction/Operations	A.1.1.	Operations Support	1	Operations Support	\$39,647,880	\$0	\$0	\$0	(\$39,647,880)	-100.0%
		A.1.2.	Teaching Experience Supplement	1	Teaching Experience Supplement		\$0	\$0	\$0	\$0	
		A.1.3.	Staff Group Insurance Premiums	1	Staff Group Insurance Premiums	\$2,123,875	\$1,200,832	\$1,200,832	\$2,401,664	\$277,789	13.1%
		A.1.4.	Workers' Compensation Insurance	1	Workers' Compensation Insurance	\$52,782	\$26,391	\$26,391	\$52,782	\$0	0.0%
		A.1.5.	Unemployment Compensation Insurance	1	Unemployment Compensation Insurance	\$398	\$199	\$199	\$398	\$0	0.0%
		A.1.6.	Texas Public Education Grants	1	Texas Public Education Grants	\$2,612,874	\$1,285,864	\$1,285,864	\$2,571,728	(\$41,146)	-1.6%
B	Infrastructure Support	B.1.1.	E&G Space Support	1	E&G Space Support	\$6,938,108	\$0	\$0	\$0	(\$6,938,108)	-100.0%
		B.1.2.	Tuition Revenue Bond Retirement	1	Tuition Revenue Bond Retirement	\$17,316,858	\$8,591,243	\$8,575,587	\$17,166,830	(\$150,028)	-0.9%
		B.1.3.	Small Institution Supplement	1	Small Institution Supplement	\$783,000	\$0	\$0	\$0	(\$783,000)	-100.0%
C		C.1.1.	Academic and Student Support	1	Academic and Student Support	\$2,068,547	\$1,034,274	\$1,034,273	\$2,068,547	\$0	0.0%
		C.2.1.	Institute for International Trade	1	Institute for International Trade	\$262,916	\$131,459	\$131,457	\$262,916	\$0	0.0%
		C.2.2.	Small Business Development Center	1	Small Business Development Center	\$238,761	\$119,381	\$119,380	\$238,761	\$0	0.0%
		C.3.1.	Institutional Enhancement	1	Instruction	\$8,662,813	\$4,331,407	\$4,331,406	\$8,662,813	\$0	0.0%
		C.3.2.	Outreach and Enrollment	1	Outreach and Enrollment	\$1,041,427	\$520,714	\$520,713	\$1,041,427	\$0	0.0%
D	Research Funds	D.1.1.	Comprehensive Research Fund	1	Comprehensive Research Fund	\$305,172	\$0	\$0	\$0	(\$305,172)	-100.0%
E	Exceptional Item Request	E.1.1.	Path to Academic and Student Success (PASS)	1	Path to Academic and Student Success (PASS)		\$2,000,000	\$2,000,000	\$4,000,000	\$4,000,000	
		E.1.2.	Addition and Renovation of Fine & Performing Arts	1	Addition and Renovation of Fine & Performing Arts		\$784,662	\$784,662	\$1,569,324	\$1,569,324	
		E.1.3.	Student Classroom and Events Center	1	Student Classroom and Events Center		\$6,538,842	\$6,538,842	\$13,077,684	\$13,077,684	

4.A. Exceptional Item Request Schedule
 86th Regular Session, Agency Submission, Version 1
 Automated Budget and Evaluation System of Texas (ABEST)

DATE: 10/15/2018
 TIME: 2:39:53PM

Agency code: 761 Agency name: Texas A&M International University

CODE	DESCRIPTION	Excp 2020	Excp 2021
-------------	--------------------	------------------	------------------

Item Name: Path to Academic and Student Success (PASS)
Item Priority: 1
IT Component: No
Anticipated Out-year Costs: Yes
Involve Contracts > \$50,000: No
Includes Funding for the Following Strategy or Strategies: 03-05-01 Exceptional Item Request

OBJECTS OF EXPENSE:

1001	SALARIES AND WAGES	1,800,000	1,800,000
1005	FACULTY SALARIES	200,000	200,000
TOTAL, OBJECT OF EXPENSE		\$2,000,000	\$2,000,000

METHOD OF FINANCING:

1	General Revenue Fund	2,000,000	2,000,000
TOTAL, METHOD OF FINANCING		\$2,000,000	\$2,000,000

FULL-TIME EQUIVALENT POSITIONS (FTE):

45.00	45.00
-------	-------

DESCRIPTION / JUSTIFICATION:

Path to Academic and Student Success will implement new, and bolster existing, student success initiatives to increase student persistence and graduation rates. These initiatives fall into three categories: (1) mitigating academic challenges, (2) building academic identity and sense of belonging, and (3) monitoring student success and timely progress toward graduation. This item builds on the success of our first-year success program by taking our intrusive advising model into the junior and senior years and providing supplemental instruction for challenging courses at, both, the lower and upper division levels to improve graduation rates. This item should be classified in the instructional support strategy with an academic and student support focus.

Major Accomplishments to Date and expected over the next two years:

A Summer Bridge Program for incoming freshman to provide intensive instruction for students with one or more TSI deficiencies so they pass the TSI and successfully transition to a college learning environment. Supplemental Instructors and Tutors for STEM and requisite nursing and business courses, both lower and upper division level, will provide additional instructional support, improving persistence and graduation rates. Monitoring student success and timely progress toward graduation will be achieved through an expansion of Academic Advising for upperclassmen, including transfer students.

Year established and funding source prior to receiving special item funding:

N/A

Formula Funding:

N/A

4.A. Exceptional Item Request Schedule
 86th Regular Session, Agency Submission, Version 1
 Automated Budget and Evaluation System of Texas (ABEST)

DATE: 10/15/2018
 TIME: 2:39:53PM

Agency code: 761

Agency name:
Texas A&M International University

CODE	DESCRIPTION	Excp 2020	Excp 2021
------	-------------	-----------	-----------

Non-General Revenue Sources of Funding:
 None.

Consequences of Not Funding:

With a first-year student persistence rate among the highest in the State at 86.3%, TAMIU has a six-year graduation rate of 53.8%. The University believes both of these metrics could be improved, however, but this is only possible with the additional funding to support the new initiatives described above.

EXTERNAL/INTERNAL FACTORS:

- This exceptional item will fund the programming of academic and student support services that are crucial for the success of TAMIU’s student population . The majority of our students hold multiple intersecting minority identities (at-risk, first-generation, low-income, non-native English speaker, female and Hispanic at the same time) all shown to hinder educational outcomes and predict low retention and graduation rates.
- The regional community leaders understand TAMIU’s strength in successfully educating at-risk students and are supportive of the institution’s student success efforts .

PCLS TRACKING KEY:

DESCRIPTION OF ANTICIPATED OUT-YEAR COSTS :

\$2,000,000 per year.

ESTIMATED ANTICIPATED OUT-YEAR COSTS FOR ITEM:

	2022	2023	2024
	\$2,000,000	\$2,000,000	\$2,000,000

4.A. Exceptional Item Request Schedule
 86th Regular Session, Agency Submission, Version 1
 Automated Budget and Evaluation System of Texas (ABEST)

DATE: 10/15/2018
 TIME: 2:39:53PM

Agency code: 761 Agency name: Texas A&M International University

CODE	DESCRIPTION	Excp 2020	Excp 2021
	Item Name: Additions and Renovation of Fine and Performing Arts Instructional and Support Spaces Item Priority: 2 IT Component: No Anticipated Out-year Costs: Yes Involve Contracts > \$50,000: Yes Includes Funding for the Following Strategy or Strategies: 02-01-02 Tuition Revenue Bond Retirement		

OBJECTS OF EXPENSE:

2008	DEBT SERVICE	784,662	784,662
TOTAL, OBJECT OF EXPENSE		\$784,662	\$784,662

METHOD OF FINANCING:

1	General Revenue Fund	784,662	784,662
TOTAL, METHOD OF FINANCING		\$784,662	\$784,662

DESCRIPTION / JUSTIFICATION:

Addition of approximately 16,000 gross square feet and renovation of approximately 10,000 gross square feet in existing Center for the Fine and Performing Arts to provide additional instructional and student support spaces including studios, classrooms, rehearsal halls, and practice spaces to meet the increased enrollment demands in fine and performing art areas.

- This facility addition has been incorporated in the University Master Plan and is included in the plan filed with the Coordinating Board.
- University will allocate \$1 million in HEF to support this project.
- The University has outgrown its current facilities for fine and performing arts, and these physical limitations impact our ability to grow these programs.
- The initial facility design did not anticipate advancing technology impacts in the fine and performing arts and the introduction of computer aided technology classrooms.
- The University is home to the Laredo Philharmonic Orchestra, Laredo Theater Guild International, and Washington's Birthday Celebration Association cultural events. These active external organizations use our facilities to promote appreciation of all forms of the fine and performing arts in the region.

Major Accomplishments to Date and expected over the next two years:
 It is not expected that the construction will be completed within two years.

Year established and funding source prior to receiving special item funding:
 N/A

Formula Funding:
 N/A

4.A. Exceptional Item Request Schedule
 86th Regular Session, Agency Submission, Version 1
 Automated Budget and Evaluation System of Texas (ABEST)

DATE: 10/15/2018
 TIME: 2:39:53PM

Agency code: 761

Agency name:
Texas A&M International University

CODE	DESCRIPTION	Excp 2020	Excp 2021
-------------	--------------------	------------------	------------------

Non-General Revenue Sources of Funding:
 N/A

Consequences of Not Funding:

The University's fine and performing arts offerings will be hampered without the additional space to address increasing enrollment in these programs , as the existing spaces do not allow for classes large enough to be economically viable.

EXTERNAL/INTERNAL FACTORS:

The explosive population growth in the Laredo and border region will require expanded educational opportunities, and this project supports the Higher Education Coordinating Board's 60x30TX plan by providing necessary resources.

PCLS TRACKING KEY:

DESCRIPTION OF ANTICIPATED OUT-YEAR COSTS :

\$784,662 per year.

ESTIMATED ANTICIPATED OUT-YEAR COSTS FOR ITEM:

	2022	2023	2024
	\$784,662	\$784,662	\$784,662

APPROXIMATE PERCENTAGE OF EXCEPTIONAL ITEM : 100.00%

CONTRACT DESCRIPTION :

Construction.

4.A. Exceptional Item Request Schedule
 86th Regular Session, Agency Submission, Version 1
 Automated Budget and Evaluation System of Texas (ABEST)

DATE: 10/15/2018
 TIME: 2:39:53PM

Agency code: 761 Agency name: Texas A&M International University

CODE	DESCRIPTION	Excp 2020	Excp 2021
	Item Name: Student Classroom and Events Center Item Priority: 3 IT Component: No Anticipated Out-year Costs: Yes Involve Contracts > \$50,000: Yes Includes Funding for the Following Strategy or Strategies: 02-01-02 Tuition Revenue Bond Retirement		

OBJECTS OF EXPENSE:

2008	DEBT SERVICE	6,538,842	6,538,842
TOTAL, OBJECT OF EXPENSE		\$6,538,842	\$6,538,842

METHOD OF FINANCING:

1	General Revenue Fund	6,538,842	6,538,842
TOTAL, METHOD OF FINANCING		\$6,538,842	\$6,538,842

DESCRIPTION / JUSTIFICATION:

Addition of approximately 200,000 gsf of assembly, classroom, activity and related support spaces with resultant infrastructure including utilities, roads and parking. Built on the site of the University's currently undeveloped property, this construction will provide necessary spaces to host institutional and student events

- The building will include classroom and activity rooms to meet increased enrollment demands.
- The building will serve as a primary mass care housing venue for students evacuated from southern, regional campuses during emergency events such as hurricanes. TAMU hosted students during Hurricane Ike and Hurricane Harvey.
- The building will provide space allowing the University to provide an additional venue in support of student activities and student focused programming including assemblies, forums, and commencement exercises pending.
- Due to continuously increasing enrollment, the University does not have a facility to support large-scale student events.
- The tremendous need for education and high quality educational facilities in this part of the State is of great interest to a large portion of the statewide leadership.

Major Accomplishments to Date and expected over the next two years:

It is not expected that the construction will be completed within two years.

Year established and funding source prior to receiving special item funding:

N/A

Formula Funding:

N/A

4.A. Exceptional Item Request Schedule
 86th Regular Session, Agency Submission, Version 1
 Automated Budget and Evaluation System of Texas (ABEST)

DATE: 10/15/2018
 TIME: 2:39:53PM

Agency code: 761

Agency name:
Texas A&M International University

CODE	DESCRIPTION	Excp 2020	Excp 2021
-------------	--------------------	------------------	------------------

Non-General Revenue Sources of Funding:
 N/A

Consequences of Not Funding:
 The University will continue struggling to host large-scale student events, and future construction on the currently undeveloped land will be hampered due to the lack of utilities and infrastructure.

EXTERNAL/INTERNAL FACTORS:

The regional community leadership is interested in providing better educational facilities to the citizens of this region so that they too can become productive citizens that contribute talent and resources for the betterment of the state.

PCLS TRACKING KEY:

DESCRIPTION OF ANTICIPATED OUT-YEAR COSTS :

\$6,538,842 per year.

ESTIMATED ANTICIPATED OUT-YEAR COSTS FOR ITEM:

	2022	2023	2024
	\$6,538,842	\$6,538,842	\$6,538,842

APPROXIMATE PERCENTAGE OF EXCEPTIONAL ITEM : 100.00%

CONTRACT DESCRIPTION :

Construction.

Agency code: **761** Agency name: **Texas A&M International University**

Code	Description	Excp 2020	Excp 2021
Item Name: Path to Academic and Student Success (PASS)			
Allocation to Strategy: 3-5-1 Exceptional Item Request			
OBJECTS OF EXPENSE:			
1001	SALARIES AND WAGES	1,800,000	1,800,000
1005	FACULTY SALARIES	200,000	200,000
TOTAL, OBJECT OF EXPENSE		\$2,000,000	\$2,000,000
METHOD OF FINANCING:			
1	General Revenue Fund	2,000,000	2,000,000
TOTAL, METHOD OF FINANCING		\$2,000,000	\$2,000,000
FULL-TIME EQUIVALENT POSITIONS (FTE):		45.0	45.0

Agency code: **761** Agency name: **Texas A&M International University**

Code	Description	Excp 2020	Excp 2021
Item Name: Additions and Renovation of Fine and Performing Arts Instructional and Support Spaces			
Allocation to Strategy: 2-1-2 Tuition Revenue Bond Retirement			
OBJECTS OF EXPENSE:			
2008	DEBT SERVICE	784,662	784,662
TOTAL, OBJECT OF EXPENSE		\$784,662	\$784,662
METHOD OF FINANCING:			
1	General Revenue Fund	784,662	784,662
TOTAL, METHOD OF FINANCING		\$784,662	\$784,662

Agency code: **761** Agency name: **Texas A&M International University**

Code	Description	Excp 2020	Excp 2021
Item Name: Student Classroom and Events Center			
Allocation to Strategy: 2-1-2 Tuition Revenue Bond Retirement			
OBJECTS OF EXPENSE:			
2008	DEBT SERVICE	6,538,842	6,538,842
TOTAL, OBJECT OF EXPENSE		\$6,538,842	\$6,538,842
METHOD OF FINANCING:			
1	General Revenue Fund	6,538,842	6,538,842
TOTAL, METHOD OF FINANCING		\$6,538,842	\$6,538,842

4.C. Exceptional Items Strategy Request
 86th Regular Session, Agency Submission, Version 1
 Automated Budget and Evaluation System of Texas (ABEST)

DATE: 10/15/2018
TIME: 2:39:53PM

Agency Code: **761** Agency name: **Texas A&M International University**

GOAL: 2 Provide Infrastructure Support

OBJECTIVE: 1 Provide Operation and Maintenance of E&G Space

Service Categories:

STRATEGY: 2 Tuition Revenue Bond Retirement

Service: 10 Income: A.2 Age: B.3

CODE DESCRIPTION	Exp 2020	Exp 2021
-------------------------	-----------------	-----------------

OBJECTS OF EXPENSE:

2008 DEBT SERVICE	7,323,504	7,323,504
Total, Objects of Expense	\$7,323,504	\$7,323,504

METHOD OF FINANCING:

1 General Revenue Fund	7,323,504	7,323,504
Total, Method of Finance	\$7,323,504	\$7,323,504

EXCEPTIONAL ITEM(S) INCLUDED IN STRATEGY:

Additions and Renovation of Fine and Performing Arts Instructional and Support Spaces
 Student Classroom and Events Center

4.C. Exceptional Items Strategy Request
 86th Regular Session, Agency Submission, Version 1
 Automated Budget and Evaluation System of Texas (ABEST)

DATE: 10/15/2018
TIME: 2:39:53PM

Agency Code: **761** Agency name: **Texas A&M International University**

GOAL: 3 Provide Non-formula Support

OBJECTIVE: 5 Exceptional Item Request

STRATEGY: 1 Exceptional Item Request

Service Categories:

Service: 19 Income: A.2 Age: B.3

CODE DESCRIPTION	Excp 2020	Excp 2021
-------------------------	------------------	------------------

OBJECTS OF EXPENSE:

1001 SALARIES AND WAGES	1,800,000	1,800,000
1005 FACULTY SALARIES	200,000	200,000
Total, Objects of Expense	\$2,000,000	\$2,000,000

METHOD OF FINANCING:

1 General Revenue Fund	2,000,000	2,000,000
Total, Method of Finance	\$2,000,000	\$2,000,000

FULL-TIME EQUIVALENT POSITIONS (FTE): 45.0 45.0

EXCEPTIONAL ITEM(S) INCLUDED IN STRATEGY:

Path to Academic and Student Success (PASS)

Agency Code: **761** Agency: **Texas A&M International University**

COMPARISON TO STATEWIDE HUB PROCUREMENT GOALS

A. Fiscal Year 2016 - 2017 HUB Expenditure Information

Statewide HUB Goals	Procurement Category	% Goal	HUB Expenditures FY 2016			Total Expenditures FY 2016		HUB Expenditures FY 2017			Total Expenditures FY 2017	
			% Actual	Diff	Actual \$	% Goal	% Actual	Diff	Actual \$	% Goal		
11.2%	Heavy Construction	11.2 %	0.0%	-11.2%	\$0	\$0	11.2 %	0.0%	-11.2%	\$0	\$0	
21.1%	Building Construction	21.1 %	0.0%	-21.1%	\$0	\$2,601,857	21.1 %	0.0%	-21.1%	\$0	\$1,126,821	
32.9%	Special Trade	20.1 %	0.5%	-19.6%	\$552	\$103,711	2.3 %	30.6%	28.3%	\$46,910	\$153,353	
23.7%	Professional Services	23.7 %	0.0%	-23.7%	\$0	\$118,956	23.7 %	0.0%	-23.7%	\$0	\$67,281	
26.0%	Other Services	3.1 %	22.9%	19.8%	\$2,492,814	\$10,876,072	13.0 %	13.0%	0.0%	\$1,268,538	\$9,757,614	
21.1%	Commodities	28.0 %	49.1%	21.1%	\$2,408,157	\$4,908,274	19.5 %	40.6%	21.1%	\$2,441,159	\$6,019,616	
	Total Expenditures		26.3%		\$4,901,523	\$18,608,870		21.9%		\$3,756,607	\$17,124,685	

B. Assessment of Fiscal Year 2016 - 2017 Efforts to Meet HUB Procurement Goals

Attainment:

Texas A&M International University exceeded two of five, or 40%, of the applicable statewide HUB procurement goals in FY 2016.
 Texas A&M International University exceeded one of five, or 20%, of the applicable statewide HUB procurement goals in FY 2017.

Applicability:

Heavy Construction category has not been applicable for fiscal years 2016 or 2017. Texas A&M International University Building Construction projects are typically managed through the Texas A&M University System.

Factors Affecting Attainment:

The number and types of projects the University bids per year vary depending on then-current needs and funding availability. Texas A&M International University ensures that HUB vendors are included in all possible solicitations, regardless of dollar value.

"Good-Faith" Efforts:

Texas A&M International University (TAMIU) continues to maintain a proactive program to support and promote HUB awareness through contact with University department staff. The Procurement Card training continues to focus in large part on instructing cardholders on the HUB program and on the importance of allowing HUBs to bid/contract for goods and services; and, also on how to effectively search for HUBs on the CMBL. Purchasing staff communicates with departments on the importance of doing business with HUBs as well. TAMIU continually explores ways to increase our level of HUB utilization through peer networking and by working closely with other State agencies to identify new HUB vendors. We actively participate in economic opportunity forums to increase HUB vendor base. The Purchasing Department solicits various minority groups on solicitations and encourages HUB participation in all contracts. Development of the Purchasing website promotes the HUB Program and encourages HUB solicitations in all purchases. TAMIU remains committed to supporting the State HUB Program.

Texas A&M International University
6.H Estimated Funds Outside the GAA
2018-19 and 2020-21 Biennia

	2018 - 2019 Biennium				2020 - 2021 Biennium			
	<u>FY 2018</u> <u>Revenue</u>	<u>FY 2019</u> <u>Revenue</u>	<u>Biennium</u> <u>Total</u>	<u>Percent</u> <u>of Total</u>	<u>FY 2020</u> <u>Revenue</u>	<u>FY 2021</u> <u>Revenue</u>	<u>Biennium</u> <u>Total</u>	<u>Percent</u> <u>of Total</u>
SOURCES INSIDE THE GAA								
State Appropriations	\$ 31,334,601	\$ 31,362,470	\$ 62,697,071		\$ 32,303,344	\$ 32,303,500	\$ 64,606,844	
Tuition and Fees (net of Discounts and Allowances)	4,968,883	5,018,572	9,987,455		5,043,665	5,068,883	10,112,548	
Endowment and Interest Income	219,182	221,374	440,556		222,481	223,593	446,074	
Other Income	7,804	7,882	15,686		7,921	7,961	15,883	
Total	<u>36,530,470</u>	<u>36,610,298</u>	<u>73,140,768</u>	<u>37.4%</u>	<u>37,577,411</u>	<u>37,603,937</u>	<u>75,181,348</u>	<u>37.7%</u>
SOURCES OUTSIDE THE GAA								
State Appropriations (HEGI & State Paid Fringes)	\$ 5,837,314	5,895,687	\$ 11,733,001		\$ 5,925,166	\$ 5,954,791	\$ 11,879,957	
Higher Education Assistance Funds	6,709,910	6,709,910	13,419,820		6,709,910	6,709,910	13,419,820	
State Grants and Contracts	108,616	109,702	218,318		110,251	110,802	221,053	
Total	<u>12,655,840</u>	<u>12,715,299</u>	<u>25,371,139</u>	<u>13.0%</u>	<u>12,745,326</u>	<u>12,775,503</u>	<u>25,520,830</u>	<u>12.8%</u>
SOURCES OUTSIDE THE GAA								
Tuition and Fees (net of Discounts and Allowances)	\$ 20,827,981	\$ 21,036,261	\$ 41,864,242		\$ 21,246,623	\$ 21,459,090	\$ 42,705,713	
Federal Grants and Contracts	8,747,837	8,835,315	17,583,152		8,923,669	8,968,287	17,891,955	
State Grants and Contracts	10,482,930	10,587,759	21,070,689		10,693,637	10,800,573	21,494,210	
Endowment and Interest Income	1,248,822	1,261,310	2,510,132		1,273,923	1,280,293	2,554,216	
Local Government Grants and Contracts	24,054	24,295	48,349		24,537	24,660	49,198	
Private Gifts and Grants	3,121,985	3,153,205	6,275,190		3,168,971	3,184,816	6,353,787	
Sales and Services of Educational Activities (net)	1,226,533	1,238,798	2,465,331		1,244,992	1,251,217	2,496,210	
Auxiliary Enterprises (net)	2,448,770	2,473,258	4,922,028		2,485,624	2,498,052	4,983,676	
Other Income	122,777	124,005	246,782		124,625	125,248	249,873	
Total	<u>48,251,689</u>	<u>48,734,206</u>	<u>96,985,895</u>	<u>49.6%</u>	<u>49,186,602</u>	<u>49,592,236</u>	<u>98,778,838</u>	<u>49.5%</u>
TOTAL SOURCES	<u>\$ 97,437,999</u>	<u>\$ 98,059,803</u>	<u>\$ 195,497,802</u>	<u>100.0%</u>	<u>\$ 99,509,339</u>	<u>\$ 99,971,676</u>	<u>\$ 199,481,015</u>	<u>100.0%</u>

6.I. Percent Biennial Base Reduction Options

10 % REDUCTION

86th Regular Session, Agency Submission, Version 1
Automated Budget and Evaluation System of Texas (ABEST)

Date: 10/15/2018

Time: 2:39:57PM

Agency code: 761 Agency name: Texas A&M International University

Item Priority and Name/ Method of Financing	REVENUE LOSS			REDUCTION AMOUNT			PROGRAM AMOUNT		TARGET
	2020	2021	Biennial Total	2020	2021	Biennial Total	2020	2021	Biennial Total

1 Instructional Flexible Hiring Freeze

Category: Programs - Service Reductions (FTEs-Hiring Freeze)

Item Comment: Texas A&M International University will analyze all vacant positions and those that become vacant through resignations, terminations, or retirements to evaluate the necessity and/or how long the hiring of the position can be delayed. Faculty positions will be further evaluated for the possibility of replacing full-time faculty with lower cost adjuncts.

Strategy: 3-1-3 Academic and Student Support

General Revenue Funds

1 General Revenue Fund	\$151,801	\$151,801	\$303,602	\$151,801	\$151,801	\$303,602			
General Revenue Funds Total	\$151,801	\$151,801	\$303,602	\$151,801	\$151,801	\$303,602			
Item Total	\$151,801	\$151,801	\$303,602	\$151,801	\$151,801	\$303,602			

FTE Reductions (From FY 2020 and FY 2021 Base Request) 2.5 2.5

2 Instructional Flexible Hiring Freeze

Category: Programs - Service Reductions (FTEs-Hiring Freeze)

Item Comment: Texas A&M International University will analyze all vacant positions and those that become vacant through resignations, terminations, or retirements to evaluate the necessity and/or how long the hiring of the position can be delayed. Faculty positions will be further evaluated for the possibility of replacing full-time faculty with lower cost adjuncts.

Strategy: 3-1-3 Academic and Student Support

6.I. Percent Biennial Base Reduction Options

10 % REDUCTION

86th Regular Session, Agency Submission, Version 1
Automated Budget and Evaluation System of Texas (ABEST)

Date: 10/15/2018

Time: 2:39:57PM

Agency code: 761 Agency name: Texas A&M International University

Item Priority and Name/ Method of Financing	REVENUE LOSS			REDUCTION AMOUNT			PROGRAM AMOUNT		TARGET
	2020	2021	Biennial Total	2020	2021	Biennial Total	2020	2021	Biennial Total
<u>General Revenue Funds</u>									
1 General Revenue Fund	\$151,801	\$151,801	\$303,602	\$151,801	\$151,801	\$303,602			
General Revenue Funds Total	\$151,801	\$151,801	\$303,602	\$151,801	\$151,801	\$303,602			
Item Total	\$151,801	\$151,801	\$303,602	\$151,801	\$151,801	\$303,602			
FTE Reductions (From FY 2020 and FY 2021 Base Request)					2.5	2.5			
3 Instructional Flexible Hiring Freeze									
Category: Programs - Service Reductions (FTEs-Hiring Freeze)									
Item Comment: Texas A&M International University will analyze all vacant positions and those that become vacant through resignations, terminations, or retirements to evaluate the necessity and/or how long the hiring of the position can be delayed. Faculty positions will be further evaluated for the possibility of replacing full-time faculty with lower cost adjuncts.									
Strategy: 3-1-3 Academic and Student Support									
<u>General Revenue Funds</u>									
1 General Revenue Fund	\$151,801	\$151,801	\$303,602	\$151,801	\$151,801	\$303,602			
General Revenue Funds Total	\$151,801	\$151,801	\$303,602	\$151,801	\$151,801	\$303,602			
Item Total	\$151,801	\$151,801	\$303,602	\$151,801	\$151,801	\$303,602			
FTE Reductions (From FY 2020 and FY 2021 Base Request)					2.5	2.5			

6.I. Percent Biennial Base Reduction Options

10 % REDUCTION

86th Regular Session, Agency Submission, Version 1
Automated Budget and Evaluation System of Texas (ABEST)

Date: 10/15/2018

Time: 2:39:57PM

Agency code: 761 Agency name: Texas A&M International University

Item Priority and Name/ <u>Method of Financing</u>	REVENUE LOSS			REDUCTION AMOUNT			PROGRAM AMOUNT		TARGET
	2020	2021	Biennial Total	2020	2021	Biennial Total	2020	2021	Biennial Total
4 Instructional Flexible Hiring Freeze									
Category: Programs - Service Reductions (FTEs-Hiring Freeze)									
Item Comment: Texas A&M International University will analyze all vacant positions and those that become vacant through resignations, terminations, or retirements to evaluate the necessity and/or how long the hiring of the position can be delayed. Faculty positions will be further evaluated for the possibility of replacing full-time faculty with lower cost adjuncts.									
Strategy: 3-1-3 Academic and Student Support									
<u>General Revenue Funds</u>									
1 General Revenue Fund	\$151,801	\$151,800	\$303,601	\$151,801	\$151,800	\$303,601			
General Revenue Funds Total	\$151,801	\$151,800	\$303,601	\$151,801	\$151,800	\$303,601			
Item Total	\$151,801	\$151,800	\$303,601	\$151,801	\$151,800	\$303,601			
FTE Reductions (From FY 2020 and FY 2021 Base Request)					2.5	2.5			
AGENCY TOTALS									
General Revenue Total	\$607,204	\$607,203	\$1,214,407	\$607,204	\$607,203	\$1,214,407			\$1,214,407
Agency Grand Total	\$607,204	\$607,203	\$1,214,407	\$607,204	\$607,203	\$1,214,407			\$1,214,407
Difference, Options Total Less Target									
Agency FTE Reductions (From FY 2020 and FY 2021 Base Request)				10.0	10.0				
Article Total				\$607,204	\$607,203	\$1,214,407			
Statewide Total				\$607,204	\$607,203	\$1,214,407			

6.L. Document Production Standards

Summary of Savings Due to Improved Document Production Standards

Agency Code:	Agency Name:	Prepared By:
761	Texas A&M International University	Fred Juarez III

Documented Production Standards Strategies	Estimated 2018	Budgeted 2019
1.	\$0	\$0
2.	\$0	\$0
3.	\$0	\$0
4.	\$0	\$0
Total, All Strategies	\$0	\$0
Total Estimated Paper Volume Reduced	-	-

<p>Description:</p> <p>Chapter 2052 of the Government Code (State Agency Reports and Publications) addresses similar issues as the rider provision. Texas A&M International University has been following the statutory requirements in this chapter since they were enacted; there are no cost savings for this biennium.</p>

Agency Code: 761		Agency: Texas A&M International University		Prepared by: Fred Juarez III								
Date: 07/31/2018			Amount Requested									
			Project Category									
Project ID #	Capital Expenditure Category	Project Description	New Construction	Health & Safety	Deferred Maintenance	Maintenance	2020-21 Total Amount Requested	MOF Code #	MOF Requested	Estimated Debt Service (If Applicable)	Debt Service MOF Code #	Debt Service MOF Requested
1	Addition and Renovation of Fine and Performing Arts Instructional and Support Spaces	Addition to and renovation of existing Center for the Fine and Performing Arts to provide additional instructional and student support spaces including new/renovated studios, classrooms, rehearsal halls, and individual instruction/practice spaces.	\$ 10,000,000				\$ 9,000,000		Tuition Revenue Bond	\$ 1,569,324	0001	General Revenue
2	Student Classroom and Events Center	Construction of large assembly, classroom, activity and related support spaces with resultant infrastructure including utilities, roads and parking to host large-format, institutional, and student events.	\$ 75,000,000				\$ 75,000,000		Tuition Revenue Bond	\$ 13,077,684	0001	General Revenue

86th Regular Session, Agency Submission, Version 1
Automated Budget and Evaluation System of Texas (ABEST)

761 Texas A&M International University					
	Act 2017	Act 2018	Bud 2019	Est 2020	Est 2021
Gross Tuition					
Gross Resident Tuition	8,842,885	9,488,845	9,547,005	9,642,475	9,738,900
Gross Non-Resident Tuition	4,049,582	4,089,934	4,094,024	4,134,964	4,176,314
Gross Tuition	12,892,467	13,578,779	13,641,029	13,777,439	13,915,214
Less: Resident Waivers and Exemptions (excludes Hazlewood)	(31,045)	(45,749)	(46,206)	(46,253)	(46,299)
Less: Non-Resident Waivers and Exemptions	(3,325,526)	(3,286,758)	(3,288,730)	(3,290,703)	(3,292,678)
Less: Hazlewood Exemptions	(225,356)	(224,251)	(226,494)	(226,720)	(226,947)
Less: Board Authorized Tuition Increases (TX. Educ. Code Ann. Sec. 54.008)	(387,939)	(372,438)	(383,627)	(384,011)	(384,395)
Less: Tuition increases charged to doctoral students with hours in excess of 100 (TX. Educ. Code Ann. Sec. 54.012)	0	0	0	0	0
Less: Tuition increases charged to undergraduate students with excessive hours above degree requirements. (TX. Educ. Code Ann. Sec. 61.0595)	0	0	0	0	0
Less: Tuition rebates for certain undergraduates (TX. Educ. Code Ann. Sec. 54.0065)	0	0	0	0	0
Plus: Tuition waived for Students 55 Years or Older (TX. Educ. Code Ann. Sec. 54.013)	0	0	0	0	0
Less: Tuition for repeated or excessive hours (TX. Educ. Code Ann. Sec. 54.014)	(147,567)	(157,967)	(157,967)	(157,967)	(157,967)
Plus: Tuition waived for Texas Grant Recipients (TX. Educ. Code Ann. Sec. 56.307)	0	0	0	0	0
Subtotal	8,775,034	9,491,616	9,538,005	9,671,785	9,806,928
Less: Transfer of funds for Texas Public Education Grants Program (Tex. Educ. Code Ann. Sec. 56c) and for Emergency Loans (Tex. Educ. Code Ann. Sec. 56d)	(1,278,550)	(1,327,010)	(1,285,864)	(1,285,864)	(1,285,864)
Less: Transfer of Funds (2%) for Physician/Dental Loans (Medical Schools)	0	0	0	0	0
Less: Statutory Tuition (Tx. Educ. Code Ann. Sec. 54.051) Set Aside for Doctoral Incentive Loan Repayment Program (Tx. Educ. Code Ann. Sec. 56.095)	0	0	0	0	0
Less: Other Authorized Deduction					
Net Tuition	7,496,484	8,164,606	8,252,141	8,385,921	8,521,064

86th Regular Session, Agency Submission, Version 1
Automated Budget and Evaluation System of Texas (ABEST)

761 Texas A&M International University					
	Act 2017	Act 2018	Bud 2019	Est 2020	Est 2021
Student Teaching Fees	0	0	0	0	0
Special Course Fees	0	0	0	0	0
Laboratory Fees	161,377	179,822	180,721	181,625	182,533
Subtotal, Tuition and Fees (Formula Amounts for Health-Related Institutions)	7,657,861	8,344,428	8,432,862	8,567,546	8,703,597
OTHER INCOME					
Interest on General Funds:					
Local Funds in State Treasury	132,792	219,182	219,401	219,621	219,840
Funds in Local Depositories, e.g., local amounts	0	0	0	0	0
Other Income (Itemize)	123,398	215,910	216,126	216,342	216,558
Subtotal, Other Income	256,190	435,092	435,527	435,963	436,398
Subtotal, Other Educational and General Income	7,914,051	8,779,520	8,868,389	9,003,509	9,139,995
Less: O.A.S.I. Applicable to Educational and General Local Funds Payrolls	(431,689)	(458,709)	(461,003)	(463,308)	(465,624)
Less: Teachers Retirement System and ORP Proportionality for Educational and General Funds	(407,680)	(450,273)	(457,027)	(463,882)	(470,841)
Less: Staff Group Insurance Premiums	(864,427)	(923,043)	(1,200,832)	(1,200,832)	(1,200,832)
Total, Other Educational and General Income (Formula Amounts for General Academic Institutions)	6,210,255	6,947,495	6,749,527	6,875,487	7,002,698
Reconciliation to Summary of Request for FY 2017-2015					
Plus: Transfer of Funds for Texas Public Education Grants Program and Physician Loans	1,278,550	1,327,010	1,285,864	1,285,864	1,285,864
Plus: Transfer of Funds 2% for Physician/Dental Loans (Medical Schools)	0	0	0	0	0
Plus: Transfer of Funds for Cancellation of Student Loans of Physicians	0	0	0	0	0
Plus: Organized Activities	0	0	0	0	0
Plus: Staff Group Insurance Premiums	864,427	923,043	1,200,832	1,200,832	1,200,832
Plus: Board-authorized Tuition Income	387,939	372,438	383,627	384,011	384,395
Plus: Tuition Increases Charged to Doctoral Students with Hours in Excess of 100	0	0	0	0	0

761 Texas A&M International University					
	Act 2017	Act 2018	Bud 2019	Est 2020	Est 2021
Plus: Tuition Increases Charged to Undergraduate Students with Excessive Hours above Degree Requirements (TX. Educ. Code Ann. Sec. 61.0595)	0	0	0	0	0
Plus: Tuition rebates for certain undergraduates (TX Educ.Code Ann. Sec. 54.0065)	0	0	0	0	0
Plus: Tuition for repeated or excessive hours (TX. Educ. Code Ann. Sec. 54.014)	147,567	157,967	157,967	157,967	157,967
Less: Tuition Waived for Students 55 Years or Older	0	0	0	0	0
Less: Tuition Waived for Texas Grant Recipients	0	0	0	0	0
Total, Other Educational and General Income Reported on Summary of Request	8,888,738	9,727,953	9,777,817	9,904,161	10,031,756

Schedule 2: Selected Educational, General and Other Funds

10/15/2018 2:39:54PM

86th Regular Session, Agency Submission, Version 1
 Automated Budget and Evaluation System of Texas (ABEST)

761 Texas A&M International University

	Act 2017	Act 2018	Bud 2019	Est 2020	Est 2021
General Revenue Transfers					
Transfer from Coordinating Board for Texas College Work Study Program (2017, 2018, 2019)	56,181	59,516	59,500	59,500	59,500
Transfer from Coordinating Board for Professional Nursing Shortage Reduction Program	200,000	363,342	100,000	100,000	100,000
Transfer of GR Group Insurance Premium from Comptroller (UT and TAMU Components only)	3,305,579	3,090,672	2,921,014	2,925,000	2,925,000
Less: Transfer to Other Institutions	0	0	0	0	0
Less: Transfer to Department of Health, Disproportionate Share - State-Owned Hospitals (2017, 2018, 2019)	0	0	0	0	0
Other (Itemize)					
Other: Fifth Year Accounting Scholarship	6,771	0	3,000	3,000	3,000
Texas Grants	8,804,242	9,488,953	9,490,000	9,490,000	9,490,000
B-on-Time Program	0	0	0	0	0
Texas Research Incentive Program	0	0	0	0	0
Less: Transfer to System Administration	0	0	0	0	0
GME Expansion	0	0	0	0	0
Subtotal, General Revenue Transfers	12,372,773	13,002,483	12,573,514	12,577,500	12,577,500
General Revenue HEF for Operating Expenses	6,709,910	6,709,910	6,709,910	6,709,910	6,709,910
Transfer from Available University Funds (UT, A&M and Prairie View A&M Only)	0	0	0	0	0
Other Additions (Itemize)					
Increase Capital Projects - Educational and General Funds	0	0	0	0	0
Transfer from Department of Health, Disproportionate Share - State-owned Hospitals (2017, 2018, 2019)	0	0	0	0	0
Transfers from Other Funds, e.g., Designated funds transferred for educational and general activities (Itemize)	0	0	0	0	0
Other (Itemize)					
Gross Designated Tuition (Sec. 54.0513)	19,539,787	20,572,997	20,619,619	20,722,717	20,826,331
Indirect Cost Recovery (Sec. 145.001(d))	438,236	361,249	335,000	338,350	341,734
Correctional Managed Care Contracts	0	0	0	0	0

Schedule 3B: Staff Group Insurance Data Elements (UT/A&M)
86th Regular Session, Agency Submission, Version 1
Automated Budget and Evaluation System of Texas (ABEST)

10/15/2018 2:39:54PM

761 Texas A&M International University

	E&G Enrollment	GR Enrollment	GR-D/OEGI Enrollment	Total E&G (Check)	Local Non-E&G
GR & GR-D Percentages					
GR %		77.00%			
GR-D/Other %		23.00%			
Total Percentage		100.00%			
FULL TIME ACTIVES					
1a Employee Only	224	172	52	224	159
2a Employee and Children	53	41	12	53	34
3a Employee and Spouse	31	24	7	31	8
4a Employee and Family	70	54	16	70	40
5a Eligible, Opt Out	15	12	3	15	10
6a Eligible, Not Enrolled	15	12	3	15	11
Total for This Section	408	315	93	408	262
PART TIME ACTIVES					
1b Employee Only	11	8	3	11	2
2b Employee and Children	0	0	0	0	0
3b Employee and Spouse	3	2	1	3	0
4b Employee and Family	0	0	0	0	0
5b Eligible, Opt Out	4	3	1	4	1
6b Eligible, Not Enrolled	20	15	5	20	6
Total for This Section	38	28	10	38	9
Total Active Enrollment	446	343	103	446	271

Schedule 3B: Staff Group Insurance Data Elements (UT/A&M)
86th Regular Session, Agency Submission, Version 1
Automated Budget and Evaluation System of Texas (ABEST)

10/15/2018 2:39:54PM

761 Texas A&M International University

	E&G Enrollment	GR Enrollment	GR-D/OEGI Enrollment	Total E&G (Check)	Local Non-E&G
FULL TIME RETIREES by ERS					
1c Employee Only	50	38	12	50	6
2c Employee and Children	2	2	0	2	0
3c Employee and Spouse	40	31	9	40	4
4c Employee and Family	2	2	0	2	0
5c Eligible, Opt Out	0	0	0	0	0
6c Eligible, Not Enrolled	0	0	0	0	0
Total for This Section	94	73	21	94	10
PART TIME RETIREES by ERS					
1d Employee Only	3	2	1	3	21
2d Employee and Children	0	0	0	0	0
3d Employee and Spouse	0	0	0	0	1
4d Employee and Family	0	0	0	0	0
5d Eligible, Opt Out	0	0	0	0	0
6d Eligible, Not Enrolled	5	4	1	5	15
Total for This Section	8	6	2	8	37
Total Retirees Enrollment	102	79	23	102	47
TOTAL FULL TIME ENROLLMENT					
1e Employee Only	274	210	64	274	165
2e Employee and Children	55	43	12	55	34
3e Employee and Spouse	71	55	16	71	12
4e Employee and Family	72	56	16	72	40
5e Eligible, Opt Out	15	12	3	15	10
6e Eligible, Not Enrolled	15	12	3	15	11
Total for This Section	502	388	114	502	272

761 Texas A&M International University

	E&G Enrollment	GR Enrollment	GR-D/OEGI Enrollment	Total E&G (Check)	Local Non-E&G
TOTAL ENROLLMENT					
1f Employee Only	288	220	68	288	188
2f Employee and Children	55	43	12	55	34
3f Employee and Spouse	74	57	17	74	13
4f Employee and Family	72	56	16	72	40
5f Eligible, Opt Out	19	15	4	19	11
6f Eligible, Not Enrolled	40	31	9	40	32
Total for This Section	548	422	126	548	318

Schedule 4: Computation of OASI
 86th Regular Session, Agency Submission, Version 1
 Automated Budget and Evaluation System of Texas (ABEST)

Agency 761 Texas A&M International University

Proportionality Percentage Based on Comptroller Accounting Policy Statement #011, Exhibit 2	2017		2018		2019		2020		2021	
	<u>% to Total</u>	<u>Allocation of OASI</u>	<u>% to Total</u>	<u>Allocation of OASI</u>	<u>% to Total</u>	<u>Allocation of OASI</u>	<u>% to Total</u>	<u>Allocation of OASI</u>	<u>% to Total</u>	<u>Allocation of OASI</u>
General Revenue (% to Total)	79.2704	\$1,650,787	77.0028	\$1,535,921	77.0028	\$1,543,600	77.0028	\$1,551,318	77.0028	\$1,559,075
Other Educational and General Funds (% to Total)	20.7296	\$431,689	22.9972	\$458,709	22.9972	\$461,003	22.9972	\$463,308	22.9972	\$465,624
Health-Related Institutions Patient Income (% to Total)	0.0000	\$0	0.0000	\$0	0.0000	\$0	0.0000	\$0	0.0000	\$0
Grand Total, OASI (100%)	100.0000	\$2,082,476	100.0000	\$1,994,630	100.0000	\$2,004,603	100.0000	\$2,014,626	100.0000	\$2,024,699

Schedule 5: Calculation of Retirement Proportionality and ORP Differential

10/15/2018 2:39:55PM

86th Regular Session, Agency Submission, Version 1

Automated Budget and Evaluation System of Texas (ABEST)

761 Texas A&M International University

Description	Act 2017	Act 2018	Bud 2019	Est 2020	Est 2021
Proportionality Amounts					
Gross Educational and General Payroll - Subject To TRS Retirement	18,599,672	16,070,031	16,311,081	16,555,748	16,804,084
Employer Contribution to TRS Retirement Programs	1,264,778	1,130,071	1,147,022	1,164,227	1,181,691
Gross Educational and General Payroll - Subject To ORP Retirement	10,035,090	11,869,861	12,047,909	12,228,628	12,412,057
Employer Contribution to ORP Retirement Programs	701,878	827,875	840,293	852,898	865,691
Proportionality Percentage					
General Revenue	79.2704 %	77.0028 %	77.0028 %	77.0028 %	77.0028 %
Other Educational and General Income	20.7296 %	22.9972 %	22.9972 %	22.9972 %	22.9972 %
Health-related Institutions Patient Income	0.0000 %	0.0000 %	0.0000 %	0.0000 %	0.0000 %
Proportional Contribution					
Other Educational and General Proportional Contribution (Other E&G percentage x Total Employer Contribution to Retirement Programs)	407,680	450,273	457,027	463,882	470,841
HRI Patient Income Proportional Contribution (HRI Patient Income percentage x Total Employer Contribution To Retirement Programs)	0	0	0	0	0
Differential					
Differential Percentage	1.3100 %	1.3100 %	1.3100 %	1.3100 %	1.3100 %
Gross Payroll Subject to Differential - Optional Retirement Program	10,035,090	11,869,861	12,047,909	12,228,628	12,412,057
Total Differential	131,460	155,495	157,828	160,195	162,598

Schedule 6: Constitutional Capital Funding
86th Regular Session, Agency Submission, Version 1
Automated Budget and Evaluation System of Texas (ABEST)

10/15/2018 2:39:55PM

761 Texas A&M International University					
Activity	Act 2017	Act 2018	Bud 2019	Est 2020	Est 2021
A. PUF Bond Proceeds Allocation	0	0	0	0	0
Project Allocation					
Library Acquisitions	0	0	0	0	0
Construction, Repairs and Renovations	0	0	0	0	0
Furnishings & Equipment	0	0	0	0	0
Computer Equipment & Infrastructure	0	0	0	0	0
Reserve for Future Consideration	0	0	0	0	0
Other (Itemize)					
B. HEF General Revenue Allocation	6,709,910	6,709,910	6,709,910	6,709,910	6,709,910
Project Allocation					
Library Acquisitions	50,000	0	0	0	0
Construction, Repairs and Renovations	445,376	430,350	449,910	449,910	449,910
Furnishings & Equipment	421,624	163,539	410,000	410,000	410,000
Computer Equipment & Infrastructure	745,187	616,021	750,000	750,000	750,000
Reserve for Future Consideration	5,047,723	5,500,000	5,100,000	5,100,000	5,100,000
HEF for Debt Service	0	0	0	0	0
Other (Itemize)					

Schedule 7: Personnel
 86th Regular Session, Agency Submission, Version 1
 Automated Budget and Evaluation System of Texas (ABEST)

Date: 10/15/2018
 Time: 2:39:55PM

Agency code: **761** Agency name: **Texas A&M International University**

	Actual 2017	Actual 2018	Budgeted 2019	Estimated 2020	Estimated 2021
Part A.					
FTE Postions					
Directly Appropriated Funds (Bill Pattern)					
Educational and General Funds Faculty Employees	213.4	213.3	218.0	222.0	222.0
Educational and General Funds Non-Faculty Employees	231.8	207.9	227.6	225.0	225.0
Subtotal, Directly Appropriated Funds	445.2	421.2	445.6	447.0	447.0
Non Appropriated Funds Employees	442.7	451.0	455.0	457.0	457.0
Subtotal, Other Funds & Non-Appropriated	442.7	451.0	455.0	457.0	457.0
GRAND TOTAL	887.9	872.2	900.6	904.0	904.0
Part B.					
Personnel Headcount					
Directly Appropriated Funds (Bill Pattern)					
Educational and General Funds Faculty Employees	220.0	221.0	223.0	225.0	225.0
Educational and General Funds Non-Faculty Employees	235.0	235.0	237.0	234.0	234.0
Subtotal, Directly Appropriated Funds	455.0	456.0	460.0	459.0	459.0
Non Appropriated Funds Employees	455.0	456.0	462.0	465.0	465.0
Subtotal, Non-Appropriated	455.0	456.0	462.0	465.0	465.0
GRAND TOTAL	910.0	912.0	922.0	924.0	924.0

Schedule 7: Personnel
 86th Regular Session, Agency Submission, Version 1
 Automated Budget and Evaluation System of Texas (ABEST)

Date: 10/15/2018
 Time: 2:39:55PM

Agency code: **761** Agency name: **Texas A&M International University**

	Actual 2017	Actual 2018	Budgeted 2019	Estimated 2020	Estimated 2021
PART C.					
Salaries					
Directly Appropriated Funds (Bill Pattern)					
Educational and General Funds Faculty Employees	\$19,095,213	\$19,139,053	\$19,259,093	\$19,379,079	\$19,474,063
Educational and General Funds Non-Faculty Employees	\$10,385,289	\$10,390,482	\$10,478,482	\$10,253,482	\$10,253,482
Subtotal, Directly Appropriated Funds	\$29,480,502	\$29,529,535	\$29,737,575	\$29,632,561	\$29,727,545
Non Appropriated Funds Employees	\$18,233,852	\$18,325,021	\$18,959,897	\$19,444,295	\$19,735,959
Subtotal, Non-Appropriated	\$18,233,852	\$18,325,021	\$18,959,897	\$19,444,295	\$19,735,959
GRAND TOTAL	\$47,714,354	\$47,854,556	\$48,697,472	\$49,076,856	\$49,463,504

Agency 761 Texas A&M International University

Project Priority:	Project Code:	Tuition Revenue Bond Request	Total Project Cost	Cost Per Total Gross Square Feet
1	1	\$ 9,000,000	\$ 10,000,000	\$ 385
Name of Proposed Facility:		Project Type:		
Addition & Renovation - Fine & Performing Art		Renovation/Construction		
Location of Facility:		Type of Facility:		
Campus		Classroom		
Project Start Date:		Project Completion Date:		
09/01/2020		08/31/2023		
Gross Square Feet:		Net Assignable Square Feet in Project		
26,000		17,000		

Project Description

- Addition of approximately 16,000 gross square feet and renovation of approximately 10,000 gross square feet in existing Center for the Fine and Performing Arts to provide additional instructional and student support spaces. Spaces will include new/renovated studios, classrooms, rehearsal halls, and individual instruction/practice spaces.
- The addition/renovation of space will allow the University to meet the increased enrollment demands in all fine and performing art areas by providing new instructional and other support spaces for students.
- This facility addition has been incorporated in the University Master Plan and is included in the plan filed with the Coordinating Board.
- University will allocate \$1 million in local funds from its HEAF allocation in support of this project.
- The University has outgrown its current facilities for fine and performing arts, and these physical limitations impact our ability to grow these programs.

Agency 761 Texas A&M International University

Project Priority: 2	Project Code: 2	Tuition Revenue Bond Request \$ 75,000,000	Total Project Cost \$ 75,000,000	Cost Per Total Gross Square Feet \$ 375
Name of Proposed Facility: Student Classroom & Events Center	Project Type: Construction			
Location of Facility: Campus	Type of Facility: Classroom & Events Space			
Project Start Date: 09/01/2020	Project Completion Date: 08/31/2023			
Gross Square Feet: 200,000	Net Assignable Square Feet in Project 130,000			

Project Description

- Addition of approximately 200,000 gsf of assembly, classroom, activity and related support spaces with resultant infrastructure including utilities, roads and parking. Built on the site of the University's currently undeveloped property, this construction will provide necessary spaces to host institutional and student events
- The building will include classroom and activity rooms to meet increased enrollment demands.
- The building will serve as a primary mass care housing venue for students evacuated from southern, regional campuses during emergency events such as hurricanes. TAMIU hosted students during Hurricane Ike and Hurricane Harvey.
- The building will provide space allowing the University to provide an additional venue in support of student activities and student focused programming including assemblies, forums, and commencement exercises.

Schedule 8C: Tuition Revenue Bonds Request by Project

Agency Code: **761**

Agency Name: **Texas A&M International University**

Project Name	Authorization Year	Estimated Final Payment Date	Requested Amount 2020	Requested Amount 2021
Science Building	2001	5/15/2022	\$ 1,605,651.00	\$ 1,596,322.00
Kinesiology Facilities	2003	5/15/2025	\$ 723,713.00	\$ 728,088.00
Completion of Fine Arts Theater	2006	5/15/2029	\$ 238,350.00	\$ 240,850.00
Student Success Center	2006	5/15/2029	\$ 1,502,255.00	\$ 1,504,755.00
Loop Road and Chill Water Loop Project	2006	5/15/2028	\$ 72,524.00	\$ 75,214.00
Addition of Instructional and Support Spaces	2016	5/15/2032	\$ 4,448,750.00	\$ 4,430,358.00
			\$ 8,591,243.00	\$ 8,575,587.00

761 Texas A&M International University

Academic and Student Support

(1) Year Non-Formula Support Item First Funded: 2014
Year Non-Formula Support Item Established: 2014
Original Appropriation: \$1,841,015

(2) Mission:

Academic and Student Support enables the hiring of faculty to handle the rapid growth in enrollment and the expansion of academic programs by providing resources to recruit and retain faculty to provide students with a quality education. This item is properly classified as an instructional support item focusing on academic and student support. Given the similarity of scope, the University has requested that its Institutional Enhancement and Outreach and Enrollment non-formula items be incorporated into this item.

(3) (a) Major Accomplishments to Date:

Funding 16 FTE faculty. This number has been reduced over time due to the cuts to non-formula items. The Texas Higher Education Coordinating Board recognizes the value of tenured and tenure track faculty's teaching and the positive impact they have on the success and persistence of undergraduates. This item helps lessen our reliance on less experienced teaching assistants and adjunct faculty.

(3) (b) Major Accomplishments Expected During the Next 2 Years:

Academic and Student Support represents 5% of the University's total appropriations and funds 6% of E&G faculty. It is base funding for the University. Over the next two years, this non-formula funding will be used to retain and, when necessary, recruit faculty members. In addition, the funding of these faculty positions helps decrease our reliance on adjunct faculty, which is critical for maintaining and improving persistence rates for first-and second-year students.

(4) Funding Source Prior to Receiving Non-Formula Support Funding:

The Academic and Student Support special item was created by a budget structure change in the 83rd Legislative Session to better reflect the scope of the initiative.

(5) Formula Funding:

N/A

(6) Category:

Instructional Support

(7) Transitional Funding:

N

(8) Non-General Revenue Sources of Funding:

None.

761 Texas A&M International University

(9) Impact of Not Funding:

Academic and Student Support represents base funding for the core, teaching function of this institution. Since this appropriation is used exclusively to fund faculty, it is imperative that it continue to ensure both the quality and survival of academic programs. Without this crucial source of base funding, the University would be unable to fund all of the faculty positions critical for access to programs resulting in fewer course offerings and increased time to degree .

(10) Non-Formula Support Needed on Permanent Basis/Discontinuu

This non-formula support is needed on an on-going, permanent basis. As previously noted, without continued funding of this item, at least until such time as the University realizes greater economies of scale, course offerings would have to be limited, as faculty positions would be reduced.

(11) Non-Formula Support Associated with Time Frame:

N/A

(12) Benchmarks:

N/A

(13) Performance Reviews:

The success of our program is evident in our enrollment growth, along with our retention and graduation rates of an overwhelmingly Hispanic population, most of whom (78%) receive some form of financial aid. With a first-year student persistence rate among the highest in the State at 86.3%, TAMIU has a six-year graduation rate of 53.8%. Perhaps the greatest indicator of success, however, is the 78% gainful employment rate of our graduates—8% over the State average. Our return on investment comes not only from our graduates' transition to productive citizenry, but also in a regional unemployment rate which mirrors the State's rate of 4%, while other, South Texas border counties range from 6.2% to 10.8%. None of this would be possible without the faculty to educate and graduate our students.

761 Texas A&M International University

Institute for International Trade

(1) Year Non-Formula Support Item First Funded:	1979
Year Non-Formula Support Item Established:	1979
Original Appropriation:	\$69,945

(2) Mission:

The Institute supports the international mission of the University by collecting and publishing economic indicators for the Texas-Mexico border region, promoting research on international trade and related issues, and encouraging scholarly productivity of its faculty and students. The Institute was originally a part of the Graduate School of International Trade. When the College of Business Administration was established, the Institute served as an internal think tank for the University and the border region. The Institute for International Trade published the NAFTA Digest for several years prior to the establishment of NAFTA, and for several subsequent years. It also published the Border Business Indicators, a newsletter using a database established at the University, through the year 2010. The Institute continues to publish The International Trade Journal (ITJ), a highly regarded quarterly academic journal, now in its 32nd year of publication. This funding has also made possible the establishment of a database containing monthly border trade statistics, including vehicular, passenger, truck, rail, and pedestrian traffic on all major Texas-Mexico border points of entry. This information is free to access and available to businesses, government agencies, other institutions, and the general public. Numerous studies and research monographs and publications dealing with economic development and competitiveness of the border region have been made possible through this item.

(3) (a) Major Accomplishments to Date:

The Institute has become a major source of information on international trade. Its data collection, crucial for trending/forecasting, supports researchers/policymakers of the border region, and technology upgrades have made the service of dispensing time-sensitive data possible. Several partnerships have been established to promote scholarly research beneficial to the border region. In 2017, the Institute jointly sponsored a highly attended public-information forum on the likely consequences of “A World Without NAFTA”, and produced testimony on NAFTA renegotiations at a hearing of the Office of the U.S. Trade Representative.

Scholars from around the world attend our annual conference where they present studies that help raise the level of education, knowledge base, and thus, the standard of living of the border region, enabling its population to reach for the standard the rest of Texas and the U.S. enjoy. The conference enhances the education of TAMU students by affording them what is often their first opportunity to present research at an academic conference. As the quality of programs has continued to improve, we have been able to serve a larger population and extend our collaborative endeavors.

Business faculty serve on the Board of the ITJ, and Ph.D. students have engaged in its publication through manuscript reviews, book reviews, and other ways, allowing them to use the journal as a training platform.

(3) (b) Major Accomplishments Expected During the Next 2 Years:

761 Texas A&M International University

The Institute will continue to promote its expertise on NAFTA-related issues by disseminating the findings from its project with the Inter-American Development Bank, the Universidad de Monterrey, and the Colegio de la Frontera Norte on the political economy of trade policy in the border region. The Institute will continue to publish the highly regarded journal, The ITJ, and will maintain a database for manuscript submissions and acceptance information for the journal. The Institute is also working in partnership with Routledge, Taylor & Francis Group, the current publishers, to get the Journal into the Social Science Citation Index which provides researchers and students with access to bibliographic and citation information needed to find research data, journals, and researchers. The Institute will also expand its cross-border relationships with Mexican and Central American businesses and public and private institutions so it can continue to provide research opportunities in international business for faculty and researchers. As the Institute matures and becomes more established in the academic community, it will be able to attract higher-level scholars to both the annual conference and the Journal, elevating the scholarly standing of the University. We are also seeking to improve our distribution of services, continuing to simplify access to our data via the internet, and addressing the possibility of additional data sets.

(4) Funding Source Prior to Receiving Non-Formula Support Funding:

These programs did not exist prior to funding and were established thanks to this appropriation.

(5) Formula Funding:

N/A

(6) Category:

Public Service

(7) Transitional Funding:

N

(8) Non-General Revenue Sources of Funding:

None

(9) Impact of Not Funding:

The continuation of funding for the Institute is essential to the State's goal of making TAMIU a center of expertise and education in international issues – and, ultimately, to bringing the border region to a level of development on par with the rest of the State. Removing funding from the Institute could jeopardize the survival of many businesses in the Texas-Mexico border region. If not for this funding, programs to fortify higher education and business and economic development of the border region would not have materialized. Continued funding will support vital research by faculty and students to enhance the border region's competitive position. Furthermore, the continued enhancement of the reputations of both, the Institute's annual conference and The International Trade Journal, as outlets of scholarship for faculty, students, and the general academic community, and the accessibility of current and useful border data and research for businesses, scholars, and policy-makers, would be undermined if funding were further reduced or eliminated.

(10) Non-Formula Support Needed on Permanent Basis/Discontinuu

761 Texas A&M International University

This non-formula support is needed on a permanent basis. Support for undergraduate as well as graduate and faculty research has been made possible through this appropriation, helping the University achieve higher quality in research and teaching as manifest in its accreditation by SACS and the School of Business' accreditation by AACSB-International. This funding also supports the publication of the ITJ, which provides our Ph.D. students the ability to gain knowledge and experience in working with an academic journal. The ITJ also promotes the University and our annual conference on a global platform. This funding has also allowed for partnerships, such as a recent partnership with the Inter-American Development Bank and three Mexican universities to undertake a study of the political economy of trade policy in the U.S.-Mexico border region. In addition, the continuous collection of data on trade and development issues related to the economic interaction between the U.S. and Mexico and the availability of this data to businesses, government agencies, and other institutions and individuals helps to support the development of the local and regional economy.

(11) Non-Formula Support Associated with Time Frame:

N/A

(12) Benchmarks:

N/A

(13) Performance Reviews:

The ITJ's annual measure of citations per document within a four-year window as calculated by SCImago Journal and Country Rank has grown from an average of 0.254 over the period 2003-2007, to 0.439 in 2008-2012, to 0.625 from 2013 to 2017. The journal earned inclusion in the 2015 edition of the Chartered Association of Business Schools' Academic Journal Guide, a mark of recognition of the journal's scholarly standards that was renewed in 2018. Our goal is to continue this trend to increase the competitiveness of the journal. The WHT Conference regularly attracts over 150 registered participants. Evaluations of the conference emphasize the high quality of the organization, academic sessions, and keynote speakers. Our goal is to continue to increase the quality of the conference while providing attendees an enjoyable experience during their time at TAMIU. We also expected continued engagement with other institutions, such as those existing with the Tec de Monterrey, Universidad Regiomontana, Universidad Autonoma de Nuevo Leon, Universidad de Tamaulipas, Universidad de Monterrey, and Colegio de la Frontera Norte, to promote scholarly research beneficial to the border region.

761 Texas A&M International University

Institutional Enhancement(Academic and Student Support)

(1) Year Non-Formula Support Item First Funded:	2000
Year Non-Formula Support Item Established:	2000
Original Appropriation:	\$5,872,337

(2) Mission:

The University was one of several beneficiaries of the 71st Texas Legislature’s action on the South Texas Border Initiative which increased appropriations to enhance the scope and quality of universities along the Texas-Mexico Border. This special appropriation, originally called “Academic Program Development,” provided access and support for at-risk low income, first generation Hispanic students to be successful and even though nominally was referred to as a Special Item, it was intended as base funding in addition to existing formula funding. This initiative supported the hiring of faculty to handle the rapid growth in enrollment and the expansion of academic programs. This continues today with student enrollment more than doubling to over 7,600 over the past 15 years. Institutional Enhancement currently funds 19% of the University’s total appropriation and almost one-third of all faculty. It represents a significant portion of base funding. This item should be classified as an instructional support strategy with an academic and student support focus. For this reason, the University has requested that this item be incorporated into its existing Academic and Student Support non-formula item.

(3) (a) Major Accomplishments to Date:

Funding 72 FTE faculty. This number has been reduced over time due to the decreases in non-formula funding. The Texas Higher Education Coordinating Board recognizes the value of tenured and tenure track faculty’s teaching and the positive impact they have on the success and persistence of undergraduates. This item helps lessen our reliance on less experienced teaching assistants and adjunct faculty.

(3) (b) Major Accomplishments Expected During the Next 2 Years:

As mentioned above, Institutional Enhancement represents 19% of the University’s total appropriations, funds almost one-third of all faculty, and is a significant portion of the University’s base funding. Over the next two years, this non-formula funding will be used to retain and, when necessary, recruit faculty members. In addition, the funding of these faculty positions helps decrease our reliance on adjunct faculty, which is critical for maintaining and improving persistence rates for first-and second-year students.

(4) Funding Source Prior to Receiving Non-Formula Support Funding:

As previously mentioned, Academic Program Development was first awarded by the 71st Legislature. The 76th Legislature obscured the purpose of this special appropriation by renaming it Institutional Enhancement.

(5) Formula Funding:

N/A

(6) Category:

Instructional Support

761 Texas A&M International University

(7) Transitional Funding:

N

(8) Non-General Revenue Sources of Funding:

None.

(9) Impact of Not Funding:

Institutional enhancement represents base funding for the core, teaching function of this institution. Since this appropriation is used exclusively to fund faculty, it is imperative that it continue to ensure both the quality and survival of academic programs. Without this crucial source of base funding, the University would be unable to afford all of its existing faculty positions resulting in fewer course offerings and increased time to degree.

(10) Non-Formula Support Needed on Permanent Basis/Discontinuu

This non-formula support is needed on an on-going, permanent basis. As previously noted, without continued funding of this item course offerings would have to be limited, as faculty positions would be reduced. Additionally, the region's population remains largely at-risk, low income, first generation Hispanics – the same demographic profile which lead to this funding all those years ago.

(11) Non-Formula Support Associated with Time Frame:

N/A

(12) Benchmarks:

N/A

(13) Performance Reviews:

The success of our program is evident in our enrollment growth, along with our retention and graduation rates of an overwhelmingly Hispanic population, most of whom (78%) receive some form of financial aid. With a first-year student persistence rate among the highest in the State at 86.3%, TAMIU has a six-year graduation rate of 53.8%. Perhaps the greatest indicator of success, however, is the 78% gainful employment rate of our graduates—8% over the State average. Our return on investment comes not only from our graduates' transition to productive citizenry, but also in a regional unemployment rate which mirrors the State's rate of 4%, while other, South Texas border counties range from 6.2% to 10.8%. None of this would be possible without the faculty to educate and graduate our students.

761 Texas A&M International University

Outreach & Enrollment(Academic and Student Support)

(1) Year Non-Formula Support Item First Funded:	2012
Year Non-Formula Support Item Established:	2012
Original Appropriation:	\$1,000,000

(2) Mission:

The University prepares students for success through intensive outreach to local and regional schools, establishing one-on-one relationships to guide high school students through the admissions and financial aid processes, providing non-traditional students in an underserved region with the tools necessary for success in support of 60x30TX. Although this item at one time focused primarily on recruitment and enrollment, reductions in recent sessions have resulted in a refocused effort. Upon entering the University, this item provides for a comprehensive program of orientation, advisement, and academic support to ensure retention and timely graduation. This item should be classified as an instructional support strategy with an academic and student support focus. For this reason, the University has requested that this item be incorporated into its existing Academic and Student Support non-formula item.

(3) (a) Major Accomplishments to Date:

- Funding 7 full-time faculty focused on developmental education and helping freshmen transition to university life.
- Funding 5 full-time professional academic advisors who provide counsel and academic support to first- and second-year students to bolster retention and timely graduation.
- Increased freshman applications by 132% (from fall 2009 to fall 2017)
- Increased first time freshman enrollment by 53% (from fall 2009 to fall 2017)
- Increased total, first-year persistence rate to 86.3% (2016 cohort) – among the highest of any regional university.
- Expanded Advising and Mentoring Center services (staffed by 5 full-time professional Academic Advisors and 36 part-time Student Mentors) for first- and second-year students including support for early alert referrals, provisionally admitted students, developmental education students, and students on probation.

(3) (b) Major Accomplishments Expected During the Next 2 Years:

- Focus the University offerings and support services to increase overall student engagement and retention targeting a 90% total persistence rate.
- Increase semester credit hour enrollment through personalized academic advising.
- Expand supplemental instruction for challenging core courses.
- Review and retarget the HB 5 College Prep Course content in mathematics and language arts with local and area high schools and community college.
- Continue to diversify Freshman Seminar course options to personalize the needs of students.

761 Texas A&M International University

(4) Funding Source Prior to Receiving Non-Formula Support Funding:

There was no funding source prior to receiving this.

(5) Formula Funding:

N/A

(6) Category:

Instructional Support

(7) Transitional Funding:

N

(8) Non-General Revenue Sources of Funding:

N/A

(9) Impact of Not Funding:

This item represents base funding for the core, teaching and instructional support functions of this institution. Since this appropriation is used exclusively to fund faculty and advisors, it is imperative that it continue to ensure the quality of academic programs and the effectiveness of our first- and second-year student success programs. Without this crucial source of base funding, the University would be unable to afford all of its existing faculty positions and professional academic advisors. This would result in fewer course offerings and a weaker first year success program which provides support for our at-risk, low income, first generation, Hispanic students, leading to increased time to degree and overall lower graduation rates.

(10) Non-Formula Support Needed on Permanent Basis/Discontinuu

This item represents base funding for the core, teaching and instructional support functions of this institution. Since this appropriation is used exclusively to fund faculty and advisors, it is imperative that it continue to ensure the quality of academic programs and the effectiveness of our first- and second-year student success programs. Without this crucial source of base funding, the University would be unable to afford all of its existing faculty positions and professional academic advisors. This would result in fewer course offerings and a weaker first year success program which provides support for our at-risk, low income, first generation, Hispanic students, leading to increased time to degree and overall lower graduation rates.

(11) Non-Formula Support Associated with Time Frame:

N/A

(12) Benchmarks:

N/A

761 Texas A&M International University

(13) Performance Reviews:

To ensure timely progress to degree, our retention rate is closely monitored by our advisors. Data of student engagement at the advising, writing, learning and tutoring centers are collected via student ID cards and analyzed to ensure student success. The success of our program is evident in our retention and graduation rates of an overwhelmingly Hispanic population, most of whom (78%) receive some form of financial aid. With a first-year student persistence rate among the highest in the State at 86.3%, TAMIU has a six-year graduation rate of 53.8%. Perhaps the greatest indicator of success, however, is the 78% gainful employment rate of our graduates—8% over the State average. Our return on investment comes not only from our graduates' transition to productive citizenry, but also in a regional unemployment rate which mirrors the State's rate of 4%, while other, South Texas border counties range from 6.2% to 10.8%. None of this would be possible without the faculty to educate and graduate our students and the advisors to provide instructional support.

761 Texas A&M International University

Path to Academic and Student Success (Academic and Student Support)

(1) Year Non-Formula Support Item First Funded: 2020
Year Non-Formula Support Item Established: 2020
Original Appropriation: \$2,000,000

(2) Mission:

Path to Academic and Student Success provides resources to implement new, and bolster existing, student success initiatives to increase student recruitment, persistence, and graduation rates. These initiatives fall into three categories: (1) mitigating academic challenges, (2) building academic identity and sense of belonging, and (3) monitoring student success and timely progress toward graduation. This item builds on the success of our first-year success program by taking our intrusive advising model into the junior and senior years and providing supplemental instruction for challenging courses at both, the lower and upper division, levels with a goal of improving graduation rates. This item should be classified in the instructional support strategy with an academic and student support focus.

(3) (a) Major Accomplishments to Date:

None. New initiative.

(3) (b) Major Accomplishments Expected During the Next 2 Years:

Mitigating academic challenges will be accomplished through a Summer Bridge Program for incoming freshman that will provide intensive instruction for students with one or more TSI deficiencies with the goal of having students pass the TSI and successfully transition to a college learning environment, and Supplemental Instructors and Tutors for STEM and requisite nursing and business courses, both lower and upper division level, to provide additional, instructional support, improving persistence and graduation rates. Monitoring student success and timely progress toward graduation will be achieved through an expansion of Academic Advising for upperclassmen, including transfer students.

(4) Funding Source Prior to Receiving Non-Formula Support Funding:

None. New initiative.

(5) Formula Funding:

N/A

(6) Category:

Instructional Support

(7) Transitional Funding:

N

761 Texas A&M International University

(8) Non-General Revenue Sources of Funding:

None.

(9) Impact of Not Funding:

With a first-year student persistence rate among the highest in the State at 86.3%, TAMIU has a six-year graduation rate of 53.8%. The University believes both of these metrics could be improved, however, but this is only possible with the additional funding to support the new initiatives described above. Without intrusive advising at the upper division level and supplemental instruction to assist students with particularly challenging courses, students are subject to lose momentum as they hit academic roadblocks or focus on working instead of studying, both increasing time to degree.

(10) Non-Formula Support Needed on Permanent Basis/Discontinuu

Permanent. As previously noted, without funding for these new initiatives, the University's success in increasing persistence and graduation rates will be limited.

(11) Non-Formula Support Associated with Time Frame:

N/A

(12) Benchmarks:

N/A

(13) Performance Reviews:

This item builds on the University's student success initiatives for freshmen and sophomores and expands them to juniors and seniors by mitigating academic challenges, building academic identify and sense of belonging, and monitoring student success and timely progress toward graduation. It is expected the University's 6-year graduation rate, already in the top half of all institutions at 53.8% will only improve.

761 Texas A&M International University

Small Business Development Center

(1) Year Non-Formula Support Item First Funded:	2008
Year Non-Formula Support Item Established:	2008
Original Appropriation:	\$150,000

(2) Mission:

The mission of the TAMIU Small Business Development Center (TAMIU SBDC) is to foster small business success. The TAMIU SBDC aims to create growth, expansion, innovation, increased productivity and improved management for entrepreneurs through one-on-one, confidential, no-cost business advising from certified business advisors, training, technical assistance, advocacy, business research, resource information and coordination with the U.S. Small Business Administration and other community business support services. The Center matches clients and expertise helping to create jobs and grow the Texas economy

The TAMIU SBDC serves many functions within higher education including community engagement, public service, applied economic projects and technology commercialization.

The TAMIU SBDC serves the small businesses and rural communities of Webb, Zapata and Jim Hogg Counties, and our certified professionals work closely with small business owners to achieve success resulting in economic impact and development.

(3) (a) Major Accomplishments to Date:

The TAMIU SBDC supports the growth and development of the Texas economy by assisting with the start-up and scale-up of small businesses through business advising, training, and research activities, leading to job creation, job retention, capital infusion, economic diversification, and business expansion. The TAMIU SBDC was recently awarded the “2018 SBDC Center of Excellence and Innovation” by the U.S. Small Business Administration San Antonio District office. This award distinguishes the TAMIU SBDC as among the best Centers in the State.

In its 9th year, the TAMIU SBDC “Small Business Management Certification Program” is recognized in the service area as a premier program providing foundational knowledge in the start-up and scale-up of small businesses. The program consists of courses in such areas as starting a business, preparing a business plan, financial control, government opportunities, financial management via QuickBooks, marketing a business via social media, and legal issues, and graduates approximately 100 small business owners and aspiring small business owners each year. Completion of the program enhances the management skills of the graduate and provides a good foundation for business success.

The SBDC program continues addressing increasing demand for small business services in emerging markets as the Texas economy diversifies and grows.

(3) (b) Major Accomplishments Expected During the Next 2 Years:

761 Texas A&M International University

The TAMIU SBDC will continue to provide the highest quality services to Laredo and the surrounding communities. The TAMIU SBDC looks to continue increasing the number of clients served and economic impact indicators. In addition, the TAMIU SBDC Small Business Management Certification Program will continue to innovate and improve its offering to the communities served.

The TAMIU SBDC will look to innovate how it interacts with clients and specifically how it disseminates information on available services for those interested in the start-up or scale-up of a small business through continuing to produce an online video program shared via YouTube and Facebook, known as “Small Business Living”.

In addition to our mobile business special event, the TAMIU SBDC has identified other local small business trends and looks to develop events to support and educate those interested in these trends. Current, local small business needs and trends include boutique fitness, emergency preparedness for restaurants, and human resources topics among others.

The demand for economic development via home-growing Texas businesses and jobs is as strong as ever. The SBDC is a proven and efficient means to continue the growth, expansion, innovation, increased productivity and improved management for small businesses in the South- West Texas Border service area.

(4) Funding Source Prior to Receiving Non-Formula Support Funding:

No prior funding source was available.

(5) Formula Funding:

N/A

(6) Category:

Public Service

(7) Transitional Funding:

N

(8) Non-General Revenue Sources of Funding:

Primarily federal grants (U.S. Small Business Administration) and some user fees from training activities.

(9) Impact of Not Funding:

761 Texas A&M International University

The TAMIU SBDC would be unable to continue operations without this funding. This would eliminate a program that is among the best in the State which not only results in exemplary business success for the small business community but cutting-edge innovation in the start-up and scale-up of small businesses. The SBDC network is among the most efficient program funded with a cost per job of approximately \$1,000, an industry low, and a return on investment that is nearly three times the cost of the program.

TAMIU SBDC Certified Business Advisors conduct market research to help companies export Texas goods and services. In addition, they help new businesses implement QuickBooks software to better manage revenues, expenses, payroll, benefits and taxes. Without funding, client services like these would be reduced or eliminated.

Additionally, there would be a \$153,177 loss of federal funds annually—an amount greater than this non-formula item—which would hamper our ability to support business development extension services.

(10) Non-Formula Support Needed on Permanent Basis/Discontinuu

Non-formula support is needed on a permanent basis, as the long-term funding leverage with the U.S. Small Business Administration.

(11) Non-Formula Support Associated with Time Frame:

N/A

(12) Benchmarks:

N/A

(13) Performance Reviews:

The performance of the TAMIU SBDC is reviewed annually by the South-West Texas Border Small Business Development Center Network and is reviewed periodically by the U.S. Small Business Administration and the national association of SBDCs, America's SBDC. The TAMIU SBDC has achieved monumental small business success for its clients. In program year 2017 alone, the TAMIU SBDC assisted 699 businesses resulting in 104 combined business start-ups and expansions, 643 combined jobs created and retained, and \$18.1 million dollars in capital investment. This highlights not only the excellence in production of the center, but the innovation as well.
